

Andrew G Lajer Ltd.

# Offers from Stock

Autumn 2023



7



13



168



207



124



268



70



1



16



78



242



77



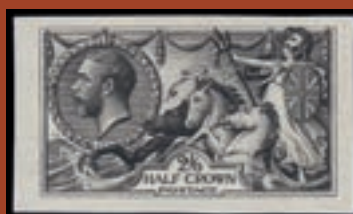
12



86



247



224



150



11



24







2



3 Brown MC



4 Magenta MC



5



6



8 State III - Faint "B"



9



10



14 Manchester "Fishtail"



15



17 Scottish MC



19



20



21



25



26



27 Archer



18



23



22



29



32



35



30 Re-entry



31



47



34



44



42





28



33



36 Plate 45



37



38



39



40



41 Wmk. Error



43



45



48 Wmk. Inv.



49



50



52



53



54



55



56



57



58



60



61



62



64



66



46



59



63



68



65



67



69



80



51



79



83



71



74



75



81



82



84





72



73



89



96



98



76



85



87



88



90



91



92



93



94



95



97



101



99



100



102



103



108



109



111



112



105



106



107



108



104



114 "X" Inverted



115 "X"  
Inverted  
& Perf  
Margin



121



122



116



117



120



127





113



118 Offset



119 Printed Both Sides



128



130 Imprimatur



134



125



138



136



140



137



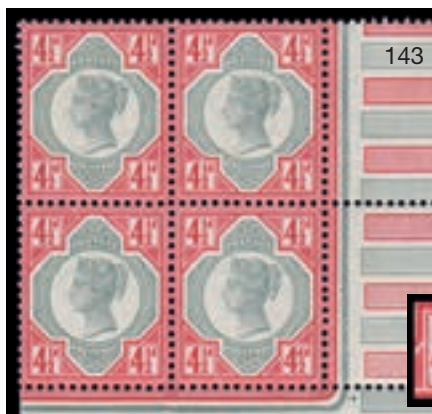
123



144



142



143



147



135 Wmk. Inv.



141



145



146



154



139



149



152

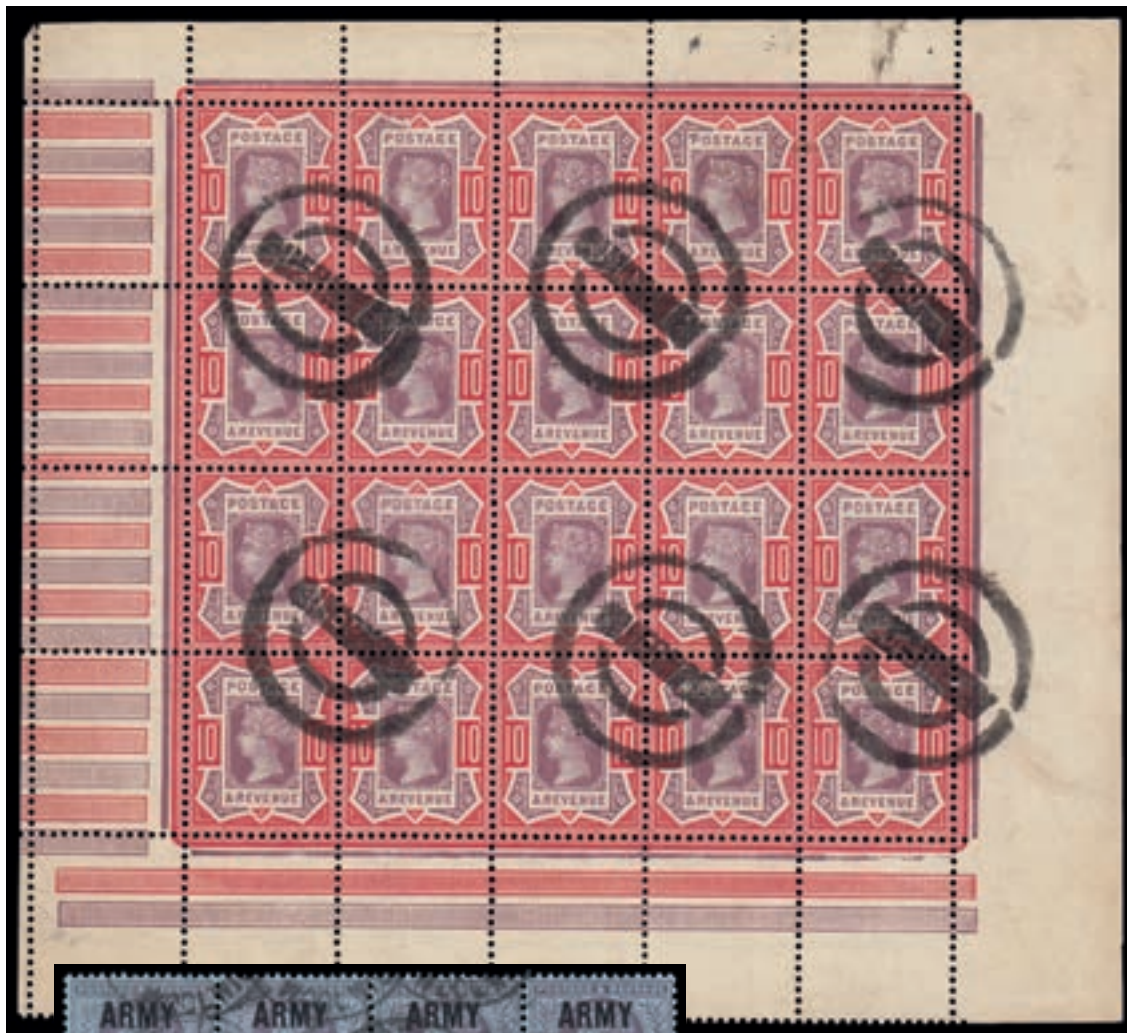


155

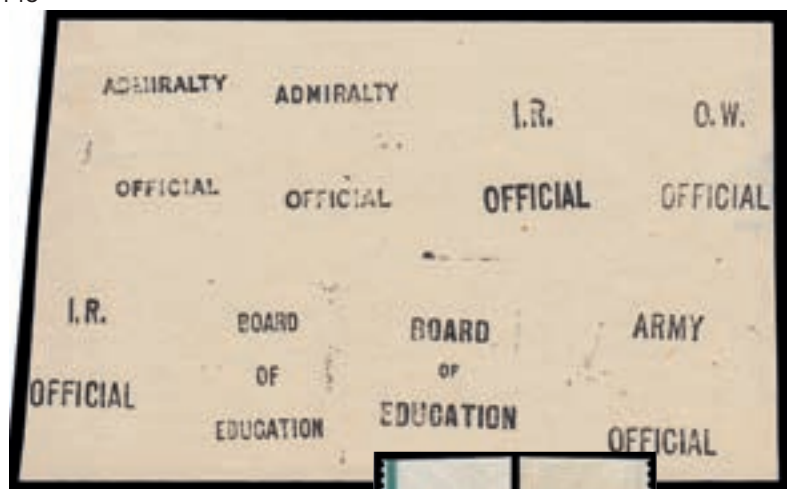


156





148



162



163



166



164



151



172



159



160





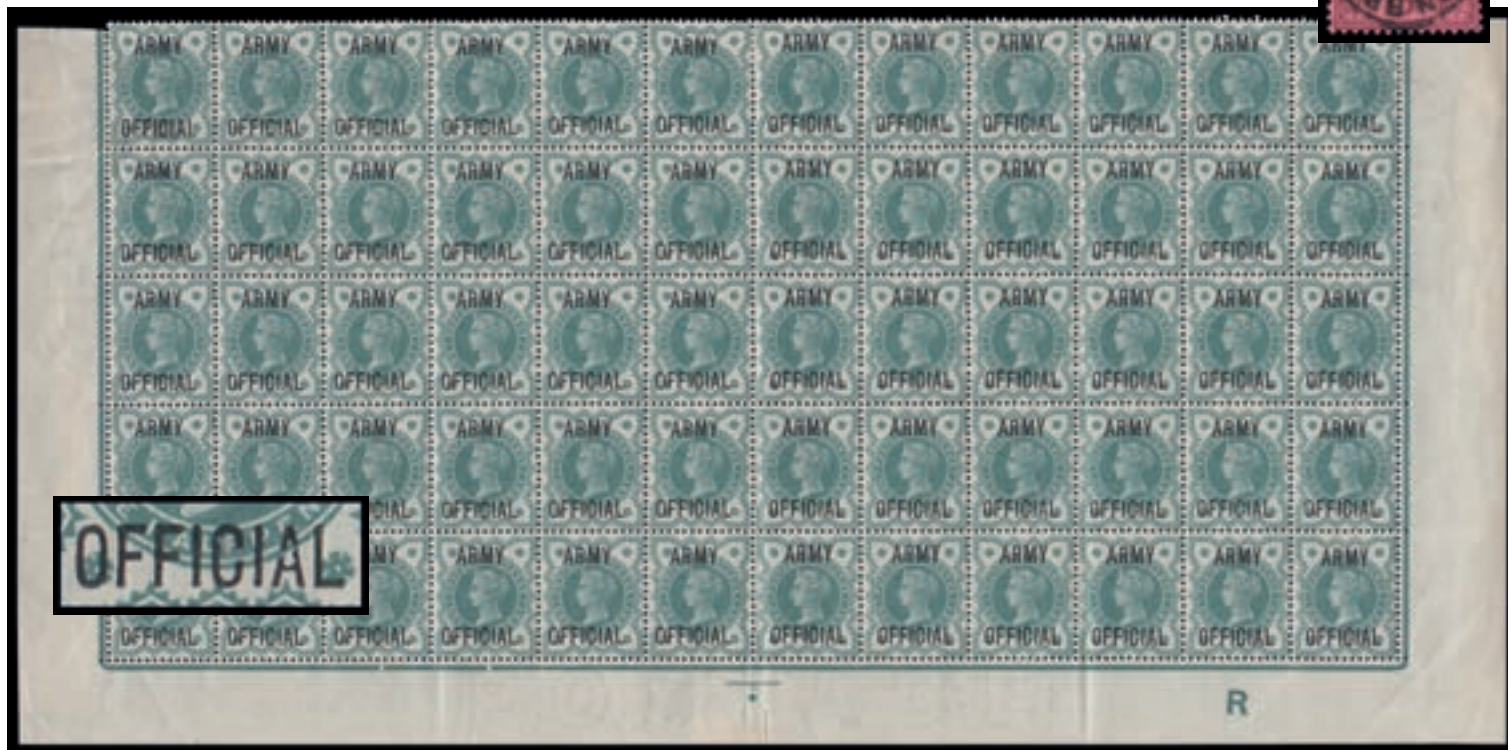
157 Offset



171 Wmk. Inv.



165



158 (Image @ 70%)



161



170



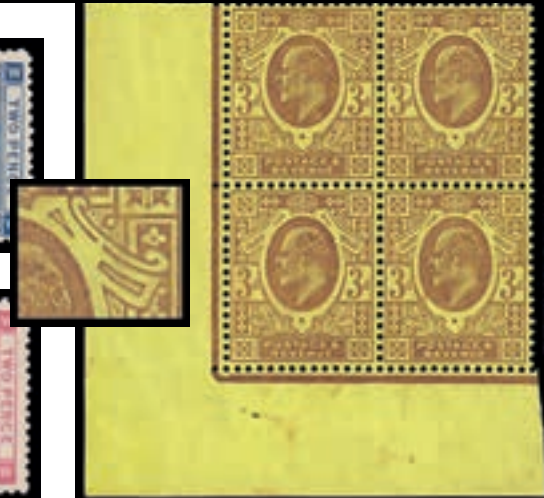
173 "Theed Head"



174



175



184





167



169



180



195



176



178



177



200



189



190



192



187



181



185



182



194



183



198



186





191



196 "Dickinson" Coated Paper



179



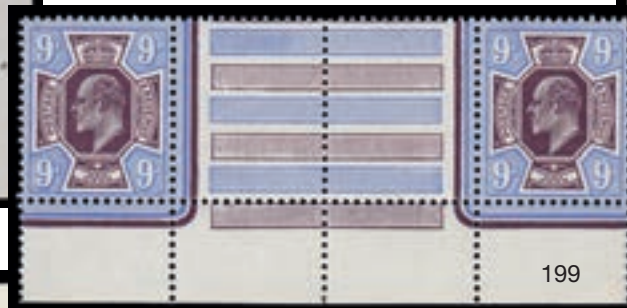
193



205



204 "The Lowden Forgery"



199



206



212



219

Admiralty Official



208



201



209





188



213



221



211



203



197



210



214 Printed on the Back



215 "POSTAGE"



202



225



217



226



223



227



216





218



234



243



235



230 Forgery - Accompanied by a letter from the Post Office sent to R. C. Alcock



228



245 "H.L.P. Retouched (Image @ 70%)



233 (Image @ 75%)



*Spectum of the first 1d, and 1 1/2d. Stamps*

238



*9th Nov. 1916*

246



220



*With kindest wishes to 'Stonefield'  
from Barnett Friedman May 1936*

236 (Image @ 75%)



239 (Image @ 60%)



229

222







240 Set of Four (Image @ 50%)



232



231



241



244



248 1840 1d.  
Mulready Letter  
Sheet. **Used on  
First Sunday.**  
Lincoln to Spalding  
cancelled by two  
strikes of the red MC  
with matching  
dispatch c.d.s.  
below for MY. 10. 40.





- 1 **SGDP38 1847 1d. Black Pl. 103 (NL). Paris Exhibition Proof.** Printed on Soft White Card. Delightful right hand marginal with inscription. Super item very rare. **£1950**
- 2 **SG3 1840 1d. Greyish Black Pl. 1a (GL).** A superb right hand marginal inscription example good wide margins and neat red MC... rarely seen. Spec. AS2. **£2750**
- 3 **SG3 1840 1d. Grey-black Pl. 1a (OC). Watery Brown Maltese Cross.** Superbly cancelled by the MC associated with Glasgow. A choice stamp with a coloured Maltese Cross! MJ Cert. (2014). **£1750**
- 4 **SG2 1840 1d. Black Pl. 1a (IK). "Watery Purple-red" (Magenta) Maltese Cross.** Good to huge margined example tied to small piece by this distinctive MC. Probably from Glasgow sub offices. Superb item. Ex Victoria 1975 lot 191. RPS Cert. **£1500**
- 5 **SG2 1840 1d. Black Pl. 1b (TA).** Clear to massive margined example with part inscription at base... light black MC cancellations. **£650**
- 6 **SG2 1840 1d. Black Pl. 2 (OA).** Full marginal inscription example neatly cancelled with a red MC... good margins all around except just in above "O" of "POSTAGE". A super looking stamp and rare with full side margin and inscription. **£1850**
- 7 **SG2 1840 1d. Black Pl. 5 (HF).** Superb used with excellent square margins and a wonderful red MC cancellation. Rare so fine. **£1250**
- 8 **SG2 1840 1d. Black Pl. 5 (DB). Second Repair – State 3.** Superb used four margined example tied to small piece by a cracking black MC... repair clearly apparent with thinning of the upper corner stars and most dramatically the faintness of the letter "B". Wonderful stamp and extremely rare so fine. *Spec. AS28a – Cat. £850.* **£695**
- 9 **SG2 1840 1d. Black Pl. 7 (CE).** Very fine used with clear to wide margins and neat black MC leaving a clear profile. Delightful. **£350**
- 10 **SG2 1840 1d. Black Pl. 8 (TL).** Exceptionally fine used with wide to massive margins cancelled by a neat red MC... last stamp in the sheet! **£400**
- 11 **SG5 1840 2d. Blue Pl. 1 (DB).** Exceptionally fine used with good to wide margins cancelled by a neat red MC... lovely rich colour. Lovely stamp. **£650**
- 12 **SG5f 1840 2d. Blue Pl. 1 (EJ – FL). London Number "1" in Maltese Cross.** An amazing block of six... must be the largest known 2d. block with a number in MC! Faults... nevertheless a fabulous rarity. *Spec. D55wa – Cat. £84,000 as singles.* **£8750**
- 13 **SG7 1841 1d. Red-brown Pl. 1b (AG).** A brilliant marginal example with perfect black MC cancellation with part marginal inscription at top. A magnificent stamp and extremely rare this fine. **£1350**
- 14 **SG7 1841 1d. Red-brown Pl. 1b (CG – CL). Manchester "Fishtail" Maltese Cross.** Sound used strip of six with good to wide margins on all sides... a very rare multiple. Stamp CL with non-coincident re-entry. **£1500**
- 15 **SG7 1841 1d. Red-brown Pl. 10 (KA).** Superb used with clear to huge margins cancelled by a cracking black MC. Seldom seen so fine. *Cat. £200.* **£135**
- 16 **SG8 1842 1d. Red-brown Pl. 24 (NA).** Stunning used with full left hand margin with inscription and neat upright black MC. Clear to good margins on other sides. Very rare this fine. **£895**
- 17 **SG8 1843 1d. Red-brown Pl. 31 (HI).** Superb used with good to wide margins a cancelled by a cracking EDINBURGH MC. *Spec. BS20tk – Cat. £120.* **£65**
- 18 **SG8 1843 1d. Red-brown Pl. 33 (PA). State 2. Non-Coincident Re-entry.** Just clear to wide margined example of this very rare stamp... faint vertical bend, nevertheless highly collectable and most attractive stamp. *Spec. BS22g – Cat. £950.* **£295**
- 19 **SG8 1853 1d. Red-brown Pl. 162 (HJ).** Superb used with massive margins and delightful LONDON District numeral "72" handstamp. A cracker. Spec. B2. **£65**
- 20 **SG8 1853 1d. Red-brown Pl. 168 (LA).** Delightful used with clear to wide margins and small part selvedge with inscription at left cancelled by a cracking LONDON district "74" numeral. Spec. B2. **£135**
- 21 **SG8m 1841 1d. Red-brown (MC). London Number "9" in Maltese Cross.** Extremely fine used on small piece with good margins and a full strike of the MC. *Cat. £180.* **£90**
- 22 **SG8m 1841 1d. Red-brown (TK – TL). London Number "12" in Maltese Cross.** Superb huge margined pair tied to small piece by cracking strikes of the numbered MC. Beautiful pair. **£495**
- 23 **SG8 1842 1d. Red-brown (GK). Wotton Under Edge Maltese Cross.** On neatly folded piece with a crisp c.d.s. alongside for FE. 1. 42. Stamp just in at left, but a spectacular exhibition piece. *SpecB1tw.* **£2250**
- 24 **SG8 1841 1d. Red-brown (JC). HILLSWICK Scots Local Handstamp.** Clear to wide margined example with a very fine strike of the Shetland Island local handstamp... Type 1 – not recorded by Alcock. Rarely seen on imperf issues. **£395**
- 25 **SG14 1841 2d. Blue Pl. 3 (KD). Double Letter "K".** Exceptionally fine used with good clear margins and very neat black MC h/s. *Spec. ES11h/ta – Cat. £275.* **£120**
- 26 **SG14 1849 2d. Blue Pl. 4 (MA).** Very fine used left marginal with inscription – good wide margins on other sides and Scottish numeral cancellation. **£350**
- 27 **SG16b 1850 1d. Red-brown Pl. 100 (KI). Perforated 16 by Henry Archer.** Fine used cancelled by small part numeral leaving a full clear profile. *Cat. £650.* **£295**
- 28 **SG17 1854 1d. Red-brown Pl. 183 (MA).** Superb unused o.g. with left margin attached... excellent bright fresh colour. Delightful stamp. **£425**
- 29 **SG17 1854 1d. Red-brown Pl. 200 (NC).** Wonderful upward shift of perforations with part of adjoining stamp at top giving an imperf-between appearance. Neat LONDON Inland Office numeral "19" cancellation. **£95**
- 30 **SG23a 1855 2d. Blue Pl. 5 (DB). Major Re-entry.** Fine SHOREHAM "707" numeral leaving the re-entry clear. Rare stamp. *Spec. F3d – Cat. £700.* **£275**
- 31 **SG24 1855 1d. Red-brown Pl. 3 (GF).** A fresh unused o.g. example of this scarce stamp. *Cat. £700.* **£350**



- 32 **SGC7 1855 1d. Red-brown Pl. 25 (QC - RC). Die II. Blued Paper. SC. P. 14.** Very fine used vertical pair hinged to original piece and tied by neat strikes of the BIRMINGHAM "75" spoon h/s. Most attractive pair - rare in multiples. BPA Cert. *Cat. £2200 as singles.* **£1100**
- 33 **SG36a 1858 2d. Blue Pl. 6 (CF).** Exceptionally fine used with lovely rich colour cancelled by a neat MANCHESTER "498" numeral. *Cat. £375.* **£190**
- 34 **SG40 1857 1d. Rose-red Pl. 34 (BF - CG).** Fine unused o.g. block of four. Dealers mark on reverse on one. *Spec. C10 - Cat. £325+.* **£175**
- 35 **SG40Wi 1857 1d. Rose-red Pl. 44 (GA - GE). Watermark Large Crown (Type 1) Inverted.** Remarkably fresh unmounted o.g. block of 20 with lovely colour and centring. *Spec C10e - Cat. £3200++.* **£1600**
- 36 **SG40 1857 1d. Rose-red Pl. 45 (NL).** Very fine used cancelled by "922" WORKSOP numeral. Very scarce Plate... seldom seen so fine. RPS Cert. *Cat. £500.* **£375**
- 37 **SG40 1857 1d. Rose-red Pl. 46 (LG).** Superb upright LONDON c.d.s. for MR. 21. 59. **£50**
- 38 **SG40 1857 1d. Rose-red Pl. 55 (KK).** Exceptionally fine used cancelled by a BUXTON c.d.s. for OC. 9. 63. **£45**
- 39 **SG40 1857 1d. Rose-red (CD).** Very fine unused o.g. example. **£95**
- 40 **SGC13 1862 1d. Rose-red Pl. R16 (OL). Provisional use of Reserve Plates.** Superb SPALDING c.d.s. for MY. 27. 64. Excellent rich colour. SG42var. **£65**
- 41 **SG43 1864 1d. Rose-red Pl. 83 (ML). Error Of Watermark.** Very fine "466" numeral of Liverpool. Very scarce. *Spec. G1c - Cat. from £500.* **£300**
- 42 **SG43 1871 1d. Rose-red Pl. 149 (PI - RL).** Superb used block of 12 cancelled by crisp BEACONSFIELD c.d.s's for SP. 26. 72. Lovely multiple. **£295**
- 43 **SG43 1873 1d. Rose-red Pl. 170 (FF).** Superb used cancelled by WEST MALLING c.d.s. **£50**
- 44 **SG43 1878 1d. Rose-red Pl. 215 (FK - GL).** Very fine unused o.g. right hand marginal block of four with fresh colour. *Cat. £340 as singles.* **£195**
- 45 **SG43 1873 1d. Rose-red (PC). Inspectors Wavy Line Handstamp.** Excellent upright strike of this very distinctive examiners mark. **£95**
- 46 **SG45 1858 2d. Blue Pl. 7 (HG). Thick Lines. Major re-entry.** Used example clearly showing the "ST" of "POSTAGE" on the Queen's shoulder. Cancelled by the LONDON numeral "17". Trace of a thin on reverse, nevertheless a spectacular re-entry and very rare. *Spec. G2e - unpriced by SG.* **£185**
- 47 **SG45 1858 2d. Blue Pl. 7. Thick Lines. (AH, JB & KB). Re-entries.** Used examples showing varying re-entries... all clearly visible. *Spec. G2f - from £120 each.* **£175**
- 48 **SG45Wi 1868 2d. Blue Pl. 12 (QF). Thick Lines. Watermark Inverted.** A very fresh unused (re-gummed) example of this extremely rare stamp... the first seen by us! Listed by SG but unpriced - based on the price of plate 9 should catalogue at £12000. BPA Cert. **£1600**
- 49 **SG48 1870 ½d. Rose-red Pl. 5 (BQ).** Superb used tied to piece by a cracking GLASGOW c.d.s. for AP. 16. 72. **£35**
- 50 **SG48 1870 ½d. Rose-red Pl. 8 (PH).** Superb used tied to small piece by a cracking GREENOCK c.d.s. for AU. 3. 80. Most attractive. *Cat. £360 with premium!* **£160**
- 51 **SG48 1874 ½d. Rose-red Pl. 11 (MX).** Superb used tied to small piece by a lovely strike of the STAMFORD "742" duplex with the c.d.s. for MR. 26. 78. **£45**
- 52 **SG48 1878 ½d. Rose-red Pl. 15 (AT).** Superb unused o.g. plate number piece with marginal perforations. Very scarce. **£575**
- 53 **SG48 1878 ½d. Rose-red Pl. 19 (LW).** Superb used tied to small piece by a complete strike of the YARMOUTH/NORFOLK c.d.s. for JA. 9. 79. **£90**
- 54 **SG59 1854 6d. Dull Lilac.** Very fine used with good to wide margins cancelled by a LONDON District numeral. *Cat. £1000.* **£375**
- 55 **SG66 1857 4d. Rose-carmine.** Very fine used cancelled by LONDON 1861 c.d.s. Scarce stamp with c.d.s. **£110**
- 56 **SG66 1857 4d. Rose-carmine.** Very rare used strip of five cancelled by the LONDON "76" duplex. **£125**
- 57 **SG66a 1857 4d. Rose.** Superb used cancelled by a lovely GLASGOW c.d.s. for NO. 19. 60. Scarce so fine. **£160**
- 58 **SG69 1856 6d. Deep Lilac.** Very fine used right hand wing marginal cancelled by LONDON District numeral "71". Nice rich colour. *Cat. £175.* **£65**
- 59 **SG72 1856 1s. Green.** Very scarce used right wing marginal block of four... cancelled by the SLIGO "410" duplex. Scarce Irish use. *Cat. £2000.* **£395**
- 60 **SG81 1863 4d. Bright Red Pl. 4 (RE). Hair Lines.** Very fresh unused o.g. example... one blunt perf, nevertheless a very collectable stamp. *Cat. £2300.* **£800**
- 61 **SG82 1863 4d. Pale Red Pl. 4 (JB). Hair Lines.** Very fine used cancelled by a neat EDINBURGH c.d.s. for AU. 16. 64. Very scarce with c.d.s. **£150**
- 62 **SG86 1862 9d. Bistre Pl. 2 (ND).** Very fine used right hand wing marginal cancelled by a neat TENBY "784" numeral. Nice stamp. *Cat. £575.* **£195**
- 63 **SG90 1862 1s. Green. Plate No. 1 Plate 2 (GE - HF).** Good used left wing marginal block of four cancelled by the numeral "12" handstamp. A rare multiple... seldom seen *Cat. £1400.* **£225**
- 64 **SG93 1872 4d. Dull Vermilion Pl. 13 (HE). Used Abroad - Malta.** Exceptionally fine used cancelled by a fine strike of the MALTA c.d.s. for JY. 7. 74. **£60**
- 65 **SG94/95 1870 4d. Vermilion Pl. 12 (NB & NG).** Superb used examples in Vermilion and Deep Vermilion shades... tied to small piece by crisp strikes of the BALBRIGGAN c.d.s. for MY. 23. 72. Lovely combination and very pretty Irish use. **£125**
- 66 **SG94 1870 4d. Vermilion Pl. 12 (RD).** Superb used cancelled by TRABANE c.d.s. for SE. 17. 72. Lovely fresh rich colour. **£75**



- 67 **SG97 & 108 1865 6d. Lilac Pl. 5 (AI) and 1869 6d. Dull Violet Pl. 8 (AI). Double Perforation.** Remarkable used pairing... both vertical sides with a double strike of the perforator giving a rouletted appearance. Issued four years apart but having almost the identical perforation variety. The plate 8 listed as J76e but unpriced and the plate 5 (J73) unlisted. Fabulous pair. **£595**
- 68 **SG101 1865 1s. Green Pl. 4 (RK - SL).** Used block of four cancelled by JERSEY "409" numerals... the lower cancellations "sliced off" almost certainly due to a Registration ribbon being placed around the original envelope. Ink fault on RK, nevertheless a scarce and interesting block. *Cat. £1250.* **£375**
- 69 **SG109 1870 6d. Mauve Pl. 9 (SI). Without Hyphen.** Superb used left wing marginal cancelled by a lovely upright LONDON c.d.s. for SP. 28. 71. Attractive. **£75**
- 70 **SG110 1867 9d. Straw Pl. 4 (DD).** Delightful used right wing marginal cancelled by a lovely crisp PADDINGTON c.d.s. for JU. 3. 73. Super fresh stamp. **£240**
- 71 **SG117 1867 1s. Green Pl. 4 (KK).** Fresh mint o.g. example. *Cat. £975.* **£550**
- 72 **SG117 1871 1s. Green Pl. 5 (NF - OG).** Superb used block of four cancelled by MANCHESTER S/E c.d.s.s for AP. 26. 72. Lovely rich colour. **£150**
- 73 **SG117 1871 1s. Green Pl. 6 (JC). Double Plate Number at Left.** Superb bottom marginal cancelled by a crisp BRIGHTON c.d.s. for JY. 24. 72. Spec. J106a. **£225**
- 74 **SG118 1867 2s. Dull Blue Pl. 1 (BK).** Superb used cancelled by a fabulous strike of the FENCHURCH ST. c.d.s. for MY. 8. 75. A real beauty! **£175**
- 75 **SG121 1880 2s. Brown Pl. 1 (TG). "SPECIMEN" Type 9.** A fresh o. g example with nice colour. A very scarce stamp. **£1750**
- 76 **SG122 1872 6d. Deep Chestnut Pl. 11 (JA - JB).** Superb used horizontal pair with part lower margin cancelled contrary to regulations by a cracking single strike of the ASHBY-DE-LA-ZOUCH c.d.s. for JU. 29. 72. **£175**
- 77 **SG123 1872 6d. Pale Buff Pl. 11 (MA - NB). Telegraph "803" Handstamp.** Superb block of four with cracking cancellations of LINCOLN. Very rare multiple on this shade. **£750**
- 78 **SG125 1873 6d. Grey Pl. 12 (BE).** Superb used left wing marginal cancelled by a lovely neat WHITSTABLE c.d.s. for JU. 25. 73. Scarce stamp so fine. **£275**
- 79 **SG139 1875 2½d. Rosy Mauve Pl. 3 (EE).** Very fine used tied to small piece by a fine strike of the "C" in diamond of oval bars – used by the P. O. Saving Bank, London Chief Office. Attractive and unusual. **£125**
- 80 **SG141 1878 2½d. Rosy Mauve Pl. 13. Die Proof.** Black on white glazed card with blank corner letters... dated "July 10 78" and initialled in pencil. *Cat. £2000.* **£550**
- 81 **SG141 1879 2½d. Rosy Mauve Pl. 16 (HD).** Fresh unused o.g. example. *Cat. £500.* **£250**
- 82 **SG142 1880 2½d. Blue Pl. 20 (OH).** Exceptionally, almost full upright strike of the LASSWADE c.d.s. for DE. 22. 80. Pretty Scottish use. **£45**
- 83 **SG143 1873 3d. Rose Pl. 12. Die Proof.** Striking book piece with blank letter squares dated "April 25th" and numbered "12-434". Rare. **£575**
- 84 **SG143 1874 3d. Rose Pl. 14 (IL).** Fine unused o.g. with excellent fresh colour. *Cat. £525.* **£325**
- 85 **SG144 1879 3d. Pale Rose Pl. 20 (OA).** Very fine unused large part o.g. example. Scarce plate. *Cat. £850.* **£495**
- 86 **SG147 1874 6d. Grey Pl. 13 (NG - OH).** A stunning used block of four cancelled by a cracking single strike of the FORT AUGUSTUS c.d.s. for NO. 2. 74. Trimmed left wing margin, nevertheless a beautiful block. **£975**
- 87 **SG147 1875 6d. Grey Pl. 14 (GD). Paid to Destination.** Right hand wing marginal cancelled solely by the red "PD" in oval. Very scarce. **£175**
- 88 **SG147 1876 6d. Grey Pl. 15 (BA).** Superb unmounted o.g. left hand marginal. Lovely fresh stamp – very scarce so fine. **£650**
- 89 **SG148 1875 1s. Deep Green Pl. 11 (SB - TC).** Fine and fresh used block of four cancelled by ALLOA "7" duplexes for JU. 21. 75. *Cat. £700.* **£495**
- 90 **SG151 1880 1s. Orange-brown Pl. 13 (GE).** Super fresh example with left wing margin trimmed where it had been adhered to something... the stamp area with excellent unmounted gum. *Cat. £4750.* **£550**
- 91 **SG151 1880 1s. Orange-brown Pl. 13 (KI).** Wonderful used left hand wing marginal with part 1880 c. d. s handstamp leaving a full clear profile. Superb. **£495**
- 92 **SG152 1876 4d. Light Sage Pl. 15 (TI). Colour Trial - Imperforate "SPECIMEN" Type 8.** Printed on watermarked and gummed paper. *Cat. £450.* **£295**
- 93 **SG153 1877 4d. Sage-green Pl. 15 (MH).** Very fine HASTINGS c.d.s. for AU. 8. 78. *Cat. £325.* **£150**
- 94 **SG153 1877 4d. Sage-green Pl. 16 (IK - IL).** Very fine used pair tied to small piece by a neat strike of the SAXMUNDHAM "690" duplex for DE. 12. 78. Attractive. *Cat. £600.* **£275**
- 95 **SG154 1880 4d. Grey-brown Pl. 17 (KI).** Exceptionally fine used showing c.d.s. of BLAIRGOWRIE duplex. Very scarce stamp finely used. *Cat. £500.* **£195**
- 96 **SG156 1876 8d. Orange Pl. 1 (SF - TF).** Unused o.g. (one u/m) vertical pair mis-perforated from the T row upwards with vertical perf misaligned due to a paper "ruck". Minor gum wrinkles in no way detract from the lovely fresh appearance... most unusual. *Cat. £3700.* **£895**
- 97 **SG157 1881 2½d. Blue Pl. 22 (HL).** Unmounted o.g. example with good colour. *Cat. £450 for m/m.* **£195**
- 98 **SG157 1881 2½d. Blue Pl. 23 (DE – EF). Wmk. Crown.** Used block of four cancelled by the CONTINENTAL NIGHT MAIL TPO handstamp for FE. 2. 82. Scarce railway multiple. **£295**
- 99 **SG158 1881 3d. Rose Pl. 21 (LA).** Fresh unused o.g. example. *Cat. £500.* **£195**
- 100 **SG158 1881 3d. Rose Pl. 21 (EB).** Superb used example cancelled by a fine blue c.d.s. for DE. 13. 81. Most attractive. **£95**



- 101 **SG159 1883 3d. on 3d. Lilac Pl. 21 (OA).** Exceptionally fine unused left hand marginal with almost full o.g. and lovely fresh colour. *Cat.* £650. £225
- 102 **SG159 1883 3d. on 3d. Lilac Pl. 21 (LF).** Superb used cancelled by a neat part New Barnet c.d.s. with fabulous fresh colour. £120
- 103 **SG160 1880 4d. Grey-brown Pl. 17 (ID). Wmk. Crown.** Very fine used cancelled by a neat MANCHETSER squared-circle handstamp for FE. 10. 81. £50
- 104 **SG161 1881 6d. Grey Pl. 17 (LA - MB).** Attractive used block of four cancelled by neat strikes of the INVERNESS "183" duplex for MY. 27. 81. Nice Scottish multiple. *Cat.* £350. £175
- 105 **SG162a 1883 6d. on 6d. Lilac Pl. 18 (SJ). Slanting Dots.** Exceptionally fine used cancelled by a bold STROUD c. d. s for SP. 21. 83. leaving variety clear. *Spec. K8Be - Cat.* £450. £295
- 106 **SG162 1883 6d. on 6d. Lilac Pl. 18 (OI). Left Dot Only.** Very fine used cancelled by a neat SHREWSBURY duplex leaving the variety clear. Seldom seen variety. *Spec. K8Bg - Cat.* £325. £150
- 107 **SG162 1883 6d. on 6d. Lilac Pl. 18 (TF). Right Dot in Two Halves.** Very fine used cancelled by small part squared-circle leaving variety clear. Scarce. *Spec. K8Bh - Cat.* £325. £225
- 108 **SG163 1881 1s. Orange-brown Pl. 13 (NB).** Fantastic used cancelled by a cracking COATBRIDGE c.d.s. Super quality! £160
- 109 **SG163 1881 1s. Orange-brown Pl. 14 (FE).** Exceptionally fine used cancelled by a neat thimble HOPE ST. GLASGOW c. d. s for JU. 6. 82. £125
- 110 **SG166 1880 1d. Venetian Red (AL). Imprimatur.** Very fine top right corner marginal. *Cat.* £275. £175
- 111 **SG167 1880 1½d. Venetian Red.** Very fine used cancelled by the "L3" LONDON Late Fee h/s for 10. JU. 84. £40
- 112 **SG169 1881 5d. Indigo.** Exceptionally fine used cancelled by a neat GUERNCEY (slug error) for AP. 21. 83. Attractive. £125
- 113 **SG172 1881 1d. Die II. Plate Proof - Black on Green.** Horizontal imperforate pair with wide margins. Scarce and excellent quality. *Cat.* £450 as singles. £190
- 114 **SG172 1881 1d. Lilac. Die II. Control "X" Inverted.** Very fine and fresh unmounted o.g. block of four. *Spec. KC53a - Cat.* £300+ for a corner pair. £95
- 115 **SG172 1881 1d. Lilac. Die II. Control "X" Inverted.** Fine o.g. corner pair with perf margin... recorded by SG but market price unknown! An extremely rare item. *Spec. KC53a(P).* £375
- 116 **SG172 1881 1d. Lilac. Die II.** Diagonal bisect on small piece with ½d. KEVII Blue-green cancelled by a fabulous WELLINGTON - SALOP "859" duplex for JU. 12. 03. Nice Shropshire item. £75
- 117 **SG172 1881 1d. Lilac. Die II. Imperforate from Imprimatur Sheet.** Tied to piece by a fine LONDON squared-circle for OC. 5. 94. Super philatelic item cancelled by favour. BPA Cert. £195
- 118 **SG173 1881 1d. Deep Purple. Die II. Offset on Reverse.** Unused o.g. example with a diagonal offset showing portions of four stamps. Nice variety. £110
- 119 **SG173a 1881 1d. Deep Purple. Die II. Watermark Inverted. Printed Both Sides.** Unmounted o.g. (gummed side) example. Scarce. *Spec K8(3)ha - Cat.* £900. £725
- 120 **SG178 1884 2s. 6d. Lilac (AG). White Paper.** Superb unmounted o.g. top marginal with outstanding fresh colour and excellent centring. A cracker! £800
- 121 **SG178 1884 2s. 6d. Lilac (JC). White Paper.** SALTAIRE c.d.s. for DE. 26. 91. £125
- 122 **SG181 1884 5s. Crimson (CF). White Paper.** "SPECIMEN" Type 11. Very fine o.g. example with fresh colour. *Spec. K12t - Cat.* £450. £295
- 123 **SG183 1884 10s. Ultramarine (KG). White Paper.** Superb strike of the MANCHESTER TELEGRAPH c.d.s. for NO. 20. 89. *Cat.* £525+. £350
- 124 **SG186 1888 £1 Brown Lilac (QA).** Superb upright STRADBALEY (Ireland) c.d.s. for MY. 2. 89. A very choice stamp with nice deep colour. RPS Cert. £3850
- 125 **SG187/196 ½d. - 1s. Unified Set of 10. "SPECIMEN" Type 9.** Fine o.g. Difficult to assemble. *Cat.* £1790. £450
- 126 **SG190 1884 2½d. Lilac (CG). French Cancellation.** Very fine used cancelled by a neat double ring GRANVILLE c.d.s. for 5. FE. 86. Unusual. £45
- 127 **SG191 1884 3d. Lilac (IE - JF).** Superb unused o.g. block of four... lower pair unmounted. *Cat.* £1500. £750
- 128 **SG191 1884 3d. Lilac (HF).** Superb used cancelled by a crisp HALIFAX c.d.s. for OC. 25. 86. *Cat.* £100+. £55
- 129 **SG192 1884 4d. Dull Green (BA).** Fine unused o.g. left hand marginal with fresh colour. *Cat.* £580. £250
- 130 **SG193 1884 5d. Dull Green (AK). Imprimatur.** Fine o.g. with excellent margins. Ex. Plate 4. *Cat.* £700. £425
- 131 **SG195 1883 9d. Dull Green (KO).** Very fine unused o.g. with fresh colour... very faint corner gum bend only shows on reverse. *Cat.* £1250. £395
- 132 **SG195 1883 9d. Dull Green (IL).** Very fine used cancelled by a neat HEREFORD c. d. s for JA. 30. 86. Good colour. *Cat.* £480. £195
- 133 **SG195Wi 1883 9d. Dull Green (GI). Watermark Sideways-inverted.** Exceptionally fine used cancelled by a FALKIRK c.d.s. for MR. 14. 87. *Cat.* £775. £275
- 134 **SG196 1884 1s. Dull Green (CF).** Superb IPSWICH c.d.s. for AU. 13. 85. *Cat.* £325. £150
- 135 **SG197Wi 1887 ½d. Vermilion "Jubilee". Watermark Inverted.** Superb unmounted o.g. bottom left corner marginal pair. Scarce so fine. £295
- 136 **SG198 1887 1½d. Dull Purple and Pale Green "Jubilee". Die Proof.** Striking Book piece of the Duty Plate mounted on small part "Day Book" dated July 1 and Dec 7 86 also endorsed 240 Leads. *Cat.* £1450. £975
- 137 **SG198 1887 1½d. Dull Purple and Pale Green "Jubilee". Deformed Leaf (Duty Pl. 4, R. 19/1).** Superb unused o.g. left marginal. *Spec. K29e - Cat.* £800. £675



- 138 **SG200 1887 2d. Grey-green and Carmine "Jubilee". Damage to Duty Tablet.** Very fine unmounted o.g. top interpanneau block of four... lower right stamp with variety. Spec. K30d. **£225**
- 139 **SG200 1887 2d. Grey-green and (Intense) Carmine "Jubilee".** Pair and single tied to small piece by lovely crisp ARMY POST OFFICE – PRETORIA c.d.s's for MY. 24. 02. a few days before the official end of the Boer War. Pretty piece. **£125**
- 140 **SG202 1887 3d. Purple on Yellow "Jubilee". Split Bottom Frame.** Unmounted o.g. block of six... lower right stamp with variety. Seldom seen. Spec. K32c. **£275**
- 141 **SG202 1887 3d. Purple on Yellow "Jubilee". Overprinted "SPECIMEN" Type 12 Diagonally.** Superb unmounted o.g. Scarce. Spec. K32s. **£95**
- 142 **SG205 1887 4d. Green and Purple-brown "Jubilee".** Superb unmounted o.g. top left interpanneau corner block of four... the lower right stamp with white "4" in one corner. Excellent fresh multiple – Ex. Aureum. **£275**
- 143 **SG206 1892 4½d. Green and Carmine "Jubilee". Dot between "4" and "½" (S. E. value) (Pane G, R. 4/5).** Bottom right stamp in a superb unmounted o.g. corner block of four. Spec. K34a. **£175**
- 144 **SG208 1887 6d. Purple on Rose-red "Jubilee".** Superb unmounted o.g. top left corner marginal block of four... stunning fresh colour. *Cat.* **£275.** **£195**
- 145 **SG209 1887 9d. Dull Purple and Blue "Jubilee". Overprinted "CANCELLED" Type 14.** Superb unmounted o.g. example... very rare seldom seen. *Spec. K38t – Cat.* **£1400 m/m.** **£850**
- 146 **SG210 1890 10d. Dull Purple and Carmine "Jubilee".** Superb unmounted o.g. example with right interpanneau margin. Excellent fresh colour. **£50**
- 147 **SG210 1890 10d. Dull Purple and Carmine "Jubilee". Damaged left tablet (Pane C, R. 1/4).** Exceptionally fine used cancelled by a crisp NEWINGTON c.d.s. for NO. 6. 01. Seldom seen. *Spec. K39c - unpriced by SG.* **£160**
- 148 **SG210 1890 10d. Dull Purple and Carmine "Jubilee".** Complete sheet of 20... GUERNSEY parcel handstamps. Lightly toned but a rare multiple. Rare. **£675**
- 149 **SG210a 1887 10d. Dull Purple and Deep Dull Carmine "Jubilee". Variety "C" for "D" in Left Value Tablet.** Unused o.g. example with almost intense carmine. *Variety unlisted by SG. Cat.* **£625.** **£295**
- 150 **SG212 1891 £1 Green (KA) "Jubilee".** Exceptionally fine used cancelled by a lovely neat MANCHESTER ACCOUNTS double ring c.d.s. for 1. MAY. 1893. Seldom seen without a C. I. postmark. Excellent colour. **£550**
- 151 **SG213 1900 ½d. Blue-green "Jubilee".** Spectacular pre-printed paper fold. The S/E corner section printed on the gummed side leaving a "blank" corner. Wonderful. **£595**
- 152 **SG214 1900 1s. Green and Carmine "Jubilee". Frame Broken at Left (Pl. F3a, R19/1).** Superb used example cancelled by a crisp CHATHAM c.d.s. for JY. 9. 01. Rarely seen used. Spec. K41b. **£350**
- 153 **1882 "OFFICIAL" Overprints.** A selection of forged overprints on piece... most unusual. **£150**
- 154 **SGO1 1882 ½d. Deep Green. "I. R. OFFICIAL".** Superb used cancelled by a lovely crisp ST LEONARDS c.d.s. for DE. 29. 83. Scarce stamp this fine. **£45**
- 155 **SGO4 1882 6d. Grey. Pl. 18 (FJ). "I. R. OFFICIAL".** Very fine used cancelled by part REGISTERED oval for 1. OC. 85. **£90**
- 156 **SGO13 1888 ½d. Vermilion. "I. R. OFFICIAL". Overprinted "CANCELLED" Type 14.** Fine unused o.g. example. BPA Cert. *Spec. L12t - Cat.* **£1000.** **£550**
- 157 **SGO41 1896 ½d. Vermilion. "ARMY OFFICIAL".** Unused o.g. control "Q" strip of three with a stunning offset on reverse affecting all stamps... fabulous variety and very rare on "OFFICIAL" issues. **£750**
- 158 **SGO42 1900 ½d. Blue-green. "ARMY OFFICIAL".** Very fine unused o.g. control "R" block of sixty... lower five rows with full margins. Listed variety Short First "I" and unlisted variety broken "A" in "OFFICIAL" are present. Nice multiple. Spec. L38kvar. **£650**
- 159 **SGO42 1900 ½d. Blue-green. "ARMY OFFICIAL".** Very fine used block of six cancelled by GOSPORT c.d.s's for AU. 24. 03. **£65**
- 160 **SGO43 1896 1d. Lilac. Die II. "ARMY OFFICIAL". Overprinted "SPECIMEN" Type 9.** Very fine o.g. block of four... lovely fresh colour. Scarce multiple. *Spec. L38s – Cat.* **£900.** **£495**
- 161 **SGO44 1896 2½d. Purple on Blue. "ARMY OFFICIAL".** Superb u/m o.g. top marginal block of four from setting 2a. Wonderful fresh multiple. **£175**
- 162 **SGO44 1896 2½d. Purple on Blue. "ARMY OFFICIAL".** Very fine used block of 12 cancelled by light WOOLWICH ARTILLERY PLACE c.d.s. 's for MY. 23. 01. Very scarce multiple. **£295**
- 163 **SGO45 1901 6d. Purple on Rose-red. "ARMY OFFICIAL".** Superb unused o.g. block of 12... m/m on three. Ex setting 3. Super colour. *Cat.* **£1450.** **£750**
- 164 **SGO45 1901 6d. Purple on Rose-red. "ARMY OFFICIAL".** Superb unmounted o.g. top left corner marginal with wonderful fresh colour. **£90**
- 165 **SGO45 1901 6d. Purple on Rose-red. "ARMY OFFICIAL".** Superb MILTON KEYNES c.d.s. for FE. 5. 02. Excellent deep fresh colour. **£50**
- 166 **SGO63 1983 9d. Dull Green (BG). "GOVT. PARCELS".** Superb LYNN c.d.s. for MY. 7. 85. Excellent fresh colour. *Cat.* **£1200.** **£850**
- 167 **SGO63 1983 9d. Dull Green (IA). "GOVT. PARCELS".** Used on Parcel Post Label of EDINBURGH... Office Stamp alongside for AP. 4. 94. Rare use of this very scarce stamp with fine original colour. RPS Cert. **£1250**
- 168 **SGO72 1900 1s. Green and Carmine. "GOVT. PARCELS".** Superb unmounted o.g. example... with top margin. Fine colour. **£550**
- 169 **SGL206 1876 3d. Carmine Pl. 2 (KA - MD). Wmk. Spray Sideways.** Perfined "B & LH" - Bailey & Leatham who operated cargo and passenger services from Hull. Rare used block of 12 cancelled by neat WELLINGTON c.d.s's for DE. 16. 77. Second largest multiple known... a complete pane of 20 is known. **£975**



- 170 SGL219 1877 1s. Green Pl. 5 (LJ - ML). Wmk. Spray Sideways. Superb used block of six cancelled by neat SHEFFIELD c.d.s's for DE. 15. 77. £300
- 171 SGL227b 1881 1s. Brown-orange Pl. 11 (QJ). Wmk. Crown Sideways-inverted. Superb used cancelled by a delightful GLASGOW c.d.s. for AP. 23. 81. £160
- 172 SGL236 1877 £1 Pale Brown-lilac Pl. 1 (CS). Wmk. Shamrocks Sideways. Superb used cancelled by two wonderful GLASGOW c.d.s's for AU. 29. 78. £700
- 173 1879 Tender Essay. "Theed" Head Die Proof A. Superb example printed in black on white glazed card. Ref. p228 Spec. Vol. I – Cat. from £2000. £1250
- 174 1880 Tender Essay. Perkins, Bacon Submission for the ½d. (2), 1½d. (3) and 2d. (1) Values Engraved by W. Ridgeway. Superb o.g. se-tenant strip of six printed in Deep Blue on perforated paper. £160
- 175 1880 Tender Essay. Perkins, Bacon Submission for the ½d. (2), 1½d. (3) and 2d. (1) Values Engraved by W. Ridgeway. Superb o.g. se-tenant strip of six printed in Pale Pink on perforated paper. £160
- 176 c. 1900 Napoleon Head 1d 'Anti Boer War' Essay. Four examples on ungummed paper in Orange, Black, Blackish Olive and Brownish Red. These essays are in the style of the ½d and 1d. King Edward VII issues and were produced in Germany as pro-Boer propaganda. £160
- 177 SG216var 1902 ½d. Deep Blue-green. D. L. R. Very fine unmounted o.g. left marginal interpanneau block of 12... excellent fresh colour. Spec. M1(3). £220
- 178 SG218b 1906 ½d. Yellowish Green. D. L. R. Booklet Pane. Five stamps plus St. Andrews Cross label. Exceptionally fine unused o.g. example well centered with good perfs... mounted on one stamp. Cat. £700. £450
- 179 SG219 1902 1d. Scarlet. D. L. R. Unmounted o.g. left marginal with a stunning pre-printed paper fold creating a "wide stamp". Delightful. £195
- 180 SG219var 1911/12 1d. Scarlet. D. L. R. Simple Cypher Watermark. P. 15x14. Partly gummed paper printed in the adopted colour... Trial E (M/B Scarlet 25602), i. e "bright scarlet". See page 86, Spec Vol 2. Last entry Unique. BPA Cert. £2750
- 181 SG221var 1902 1½d. Slate Purple and Green. D. L. R. Frame Broken at Bottom (Pl. H1, R. 20/2). Fine part TRURO c.d.s. Scarce variety. Spec. M8f. £120
- 182 SG224var 1902 1½d. Deep Slate Purple and Bluish-green (C). D. L. R. Very fine unmounted o.g. top left corner marginal example. Spec. M9(3) – Cat. £95. £65
- 183 SG227 1906 2d. Pale Grey-green and Carmine-red (C). D. L. R. Distorted Tablet - "Rhombus", Early State. (Pl. D3, R. 1/1). Exceptionally fine unmounted o.g. top left corner marginal block of six... rare variety especially in a multiple. Spec. M12b. £850
- 184 SG233b 1902 3d. Pale Purple on Lemon (C). D. L. R. Broken Scroll (Pl. 5, R. 20/2). Superb unused o.g. example in bottom right corner marginal block of four... variety unmounted. Spec. M20(4)b. £495
- 185 SG235 1902 4d. Green and Grey-brown. D. L. R. Very fine u/m o.g. marginal. Spec. M23(1) – Cat. £125. £751
- 186 SG236a 1906 4d. Green and Chocolate-brown (C). D. L. R. Superb unmounted o.g. top right hand corner marginal block of four. Cat. £375 as a block. £225
- 187 SG244 1906 5d. Slate Purple and Ultramarine (C). D. L. R. Superb unmounted o.g. bottom marginal example. Spec. M29(2) – Cat. £120. £75
- 188 SG244 1906 5d. Slate Purple and Ultramarine (C). D. L. R. Superb unmounted o.g. bottom marginal block of four. Spec. M29(2) – Cat. £575 for the block. £295
- 189 SG245 1902 6d. Black. D. L. R. Plate Proof. Printed in black on thin white card – very fine. Cat. £160. £95
- 190 SG250 1902 9d. Dull Purple and Ultramarine. D. L. R. Superb u/m o.g. Spec. M39(1) – Cat. £250. £160
- 191 SG257a 1905 1s. Dull Green and Carmine (C). D. L. R. Superb used block of 12 cancelled by cracking FARNWORTH, BOLTON c.d.s's for AU. 1. 07. Stunning multiple with outstanding colour. Spec. M46(1). £675
- 192 SG260 1902 2s. 6d. Lilac. D. L. R. Exceptionally fine used cancelled by a very neat BASINGSTOKE c.d.s. for DE. 22. 02. £125
- 193 SG260var 1902 2s. 6d. Lilac. D. L. R. Plate Proof. Horizontal imperforate pair on poor quality buff paper without watermark. Very fine. Cat. £350. £195
- 194 SG268 1911 ½d. Dull Green. Harrison. P. 14. Fine o.g. example with a wonderful offset on reverse affecting ¾ of the stamp. £95
- 195 SG288 1911 1½d. Dull Purple and Green. S. House. "SPECIMEN" Type 22. Superb unmounted o.g. bottom interpanneau example. Rare so fine. Spec. M10s – Cat. £1250. Unlisted in Concise. £500
- 196 SG301var 1913 6d. Dull Purple "Dickinson" Coated Paper. S. House. A superb unmounted o.g. bottom right corner block of four with date cuts under 12th. Rare block. RPS Cert. Spec M34(2) – Cat. £2200+. £1500
- 197 SG306 1911 9d. Reddish Purple and Light Blue. S. House. Superb used block of four on small piece cancelled by a single strike ROUNDHAY c.d.s. Delightful. £265
- 198 SG307a 1913 9d. Deep Plum and Blue. S. House. Very fine unmounted o.g. top marginal. Spec. M41(5) – Cat. £125. £75
- 199 SG307a 1913 9d. Deep Plum and Blue. S. House. Unmounted o.g. interpanneau pair. Fresh colour. £165
- 200 SG309var 1911 10d. Dull Purple and Deep Scarlet. S. House. Superb u/m o.g. top right corner interpanneau block of four with stunning fresh colour. Rare multiple. RPS Cert. Spec. M44(4) – Cat. £2000+. £1250
- 201 SG314 1912 1s. Green and Carmine. S. House. Very fine unmounted o.g. bottom right corner marginal with date cuts under "H". £90
- 202 SG317 1911 2s. 6d. Dark Purple. S. House. "CANCELLED" Type 24. Fresh m/m o.g. example... rare overprint. Spec. M50(3)t – Cat. £3500. £1100
- 203 SG319 1912 10s. Blue. S. House. Exceptionally fine unused o.g. bottom right corner marginal example with date cuts under first "L". Spec. M54(2). £650



- 204 **SG320 1911 £1 Deep Green. S. House.** The Lowden Forgery. Very fine example tied to piece by the fake JERSEY u. d. c. Produced by photo lithography and line perforated... the forger George Lowden was sentenced to three years penal servitude! **£975**
- 205 **SGO37 1902 1d. Scarlet. "O. W. OFFICIAL".** Very fine used bottom right corner marginal with control "B" from plate 87R. Cancelled by South Western District Office c.d.s's for MY. 9. 04. Exceptionally rare. **£2500**
- 206 **SGO50 1902 6d. Pale Dull Purple. "ARMY OFFICIAL".** Superb unmounted o.g. corner interpanneau block of four. Watermark "E" in margin. **£600**
- 207 **SGO52 1903 6d. Pale Dull Purple. "ARMY OFFICIAL". Type 2 (L6a). Forme 4.** Superb u/m o.g. example... seldom seen this fine. Rare. RPS Cert. **£2250**
- 208 **SGO101/O102, O104, O109 & O111/O112 1903/04 ½d. - 3d. "ADMIRALTY OFFICIAL", "SPECIMEN" Type 16 (1½d. unlisted).** Group of six values affixed to part page from a presentation album... the odd imperfection, nevertheless a remarkable group with the 1½d. not recorded with "SPECIMEN" overprint. **£1500**
- 209 **c.1902 Revenues - Unappropriated Dies. "SPECIMEN" Type 16.** Imperforate on ordinary paper. Set of six values £2 – £20. **£900**
- 210 **1910 3d. Downey Head Hentschel Zinc Bloc Essay for Colour.** Dull Reddish Mauve on white wove paper with handstruck "W/93" in black and pencil note 'Tyrian Purple'. Extremely attractive and very rare. **£1350**
- 211 **SG338 1912 ½d. Green. Wmk. Crown. Die 2. White scales (Pl. ? R. 1/3).** Very fine unmounted example in top left corner marginal block of six. Spec. N4k. **£250**
- 212 **SG341 1912 1d. Bright Scarlet. Die 2. Wmk Crown. INDIAN Handstamp.** Very fine cancelled by JIND c.d.s. Rarely on GB stamp. **£95**
- 213 **SG351 1913 ½d. Green. Royal Cypher.** Very fine unused o.g. "M 19" control pair with a stunning pre-printed paper fold resulting in a blank corner. Super variety. **£650**
- 214 **SG351 1913 ½d. Green. Royal Cypher. Printed on the back.** Marginal pair perfined "C. A" clearly showing printing on the gummed side. Unrecorded SG. Rare! Ex Shaida. **£1750**
- 215 **SG354 1913 ½d. Yellow-green. Royal Cypher. "POSTAGE" Watermark.** Unmounted o.g. lower right corner marginal block of 10 with complete "POSTAGE" watermark reading downwards in the right hand vertical column. Spec. N14(8)yb. **£225**
- 216 **SG357 1912 1d. Royal Cypher. Medal Head Master Die Proof in Rose-pink. Stage 3.** Printed on glazed proof paper. Quite superb. *Cat. £6000.* **£2350**
- 217 **SG357var 1922 1d. Pale Scarlet. Somerset House Experimental Coil Printing. "SPECIMEN" Type 30.** Superb unmounted o.g. vertical pair with the typically coarse impression. *Spec. N17As – Cat. £1900+.* **£1100**
- 218 **SG357 1912 1d. Scarlet. Colour Standard "CANCELLED" Type 24.** Control "H 16" block of six with "Colour" and initials "CD" in pencil... usual gum wrinkles, lower strip unmounted. Very scarce multiple. Spec. N16w. **£1350**
- 219 **SG363a 1912 1½d. Chocolate-brown. Royal Cypher – No Watermark.** Superb unmounted o.g. example of the rarely seen stamp. RPS Cert. **£325**
- 220 **SG372 1912 2½d. Blue. Royal Cypher. "CANCELLED" Type 24.** Imperforate interpanneau bottom marginal block of 12 – lower row u/m, creasing clear of stamps. A very scarce piece. *Spec. N21v – Cat. £2400+.* **£1100**
- 221 **SG373as 1920 2½d. Dull Prussian Blue. Royal Cypher. "SPECIMEN" Type 23.** Superb u/m o.g. Remarkable combination. Rare. RPS Cert. Spec. N21(17)t. **£750**
- 222 **SG378var 1913 4d. Deep Slate-green. Royal Cypher.** Vertical pair placed sideways on Parcel Post label of YEALAND CONYERS (Lancs) crisply cancelled by c.d.s's for OC. 7. 13. Scarce shade. **£125**
- 223 **SG381 1913 5d. Brown. Royal Cypher. "SPECIMEN" Type 26.** Very fine o.g. example with lovely fresh colour. *Spec. N25u – Cat. £250.* **£150**
- 224 **SG399 1913 2s. 6d. Black. Waterlow "Sea Horse". Colour Trial.** Imperforate on thin white ungummed paper... A superb example. Rare and attractive - Ex. The Lady Mari Bury. **£1750**
- 225 **SG403var 1913 £1 Yellowish Green. Waterlow "Sea Horse". Colour Trial on Joyson Paper from the N. P. M. Archives.** Deep shade – overprinted "CANCELLED" Type 24. A stunningly fresh left hand marginal example. *Cat. £3250.* **£1800**
- 226 **SG411var 1915 10s. Deep (Intense) Bright Blue. D. L. R. "Sea Horse".** Very fine used cancelled by a neat 1916 PRESTON c.d.s. Excellent colour. RPS Cert. *Spec N70(5) – Cat. £4000.* **£1350**
- 227 **SG416 1919 5s. Rose-red. Bradbury "Sea Horse".** Exceptionally fine used cancelled by the WADDON AERODROME – CROYDON c.d.s. Very scarce and seldom seen. **£175**
- 228 **SG417 1919 10s. Dull Grey-blue. Bradbury "Sea Horse".** Superb used marginal (both sides) block of eight tied to small piece cancelled by light c.d.s. handstamps. Excellent colour and a choice multiple. **£1500**
- 229 **SG425var 1934 5d. Deep Bright Ochre-brown. Waterlow Provisional printing.** Fine o.g. control "U 34" strip of three. Very rare. Spec. N40(5). RPS Cert. **£1000**
- 230 **SG438 1929 £1 Black. Postal Union Congress. Forgery.** Used on Registered piece cancelled by a GREENOCK c.d.s. Accompanied by a letter from the Post Office sent to R. C. Alcock, the renowned philatelist, saying no action will be taken about this. Unusual! Ex Shaida. **£1500**
- 231 **SG440 1934 1d. "Photogravure". Imperforate Photogravure Trial.** Approved Head... bottom right corner marginal pair printed in "Emerald Green" on ordinary gummed paper without watermark. Superb unmounted o.g. *Cat. £1500.* **£995**
- 232 **SG440 1934 1d. "Photogravure". Imperforate Photogravure Trial.** Approved Head... top right corner marginal pair printed in brown on ordinary gummed paper without watermark. Superb u/m o.g. *Cat. £1500.* **£995**
- 233 **SG440/1 1934/5 1d. and 1½d. "Photogravure".** Blocks of four affixed to Harrison presentation card. **£550**



- 234 **SG441var 1934 1½d. Red-brown. "Photogravure". Large Format. Watermark Inverted.** Superb u/m o.g. "V/34" control, cyl. 68R dot, perf type 2A block of six. A rarity – only the second cylinder seen. Spec. N51a. **£2300**
- 235 **SG442 1935 2d. Orange. "Photogravure". Cylinder Number in Right Margin.** Unused o.g. strip of three with mis-cut margin resulting in the cylinder number appearing on the right side! **£150**
- 236 **SG453/6 1935 Silver Jubilee.** Set of four in presentation type sunken frame signed by the designer Barnett Freedman. Rare. **£850**
- 237 **Fifth Philatelic Congress of Great Britain – Edinburgh 1913.** Complete Imperforate Proof sheet of 12. Printed on gummed paper without watermark in black and deep ultramarine... depicts the Sir Walter "Scott Monument". Lightly mounted in margins only and with excellent fresh colour. Stunning Congress piece. **£395**
- 238 **1916 National Philatelic War Fund. Colour Trial.** Printed in Black and "No. 11 Brown" on thin paper. Very attractive. **£250**
- 239 **Twentieth Philatelic Congress of Great Britain – London 1933.** Imperforate proof sheet of 12 labels printed on watermarked, wove, Hand-made paper in black ink... one of seven different samples issued by the BPA and printed by De La Rue. Superb unmounted o.g. **£125**
- 240 **22nd Philatelic Congress of Great Britain – Bath 1935.** Four complete sheetlets (all numbered "114") of 12 labels printed by Perkins, Bacon in green, red, brown and blue... each depicting various aspects of Bath, notable philatelic/postal personages and King George V. All superb unmounted o.g. Accompanied by typed description of each label. Delightful. **£295**
- 241 **SG462/67 1944 German Propaganda Forgeries.** Set of six with forged cancellations... the design incorporating the Star of David and Hammer & Sickle. **£175**
- 242 **SG469a 1938 5d. Brown. Imperforate.** Superb unmounted o.g. (mounted in top margin) example. Fabulous KGVI item and very rare. BPA Cert. **SG469a pair catalogued at £8500!** **£2950**
- 243 **SG470 1939 6d. Purple. Coil Join.** Vertical strip of four with central join. Mounted on upper stamp only. Spec. Q22 – Unpriced. **£75**
- 244 **SG470 1939 6d. Purple.** Unmounted o.g. right hand marginal block of nine... the centre column with a stunning Dr Blade type over-inking variety. **£375**
- 245 **SG497 1948 6d. Violet. Olympic Games. Initials "H.L.P." – H. L. Palmer. Variety Retouched.** Lower three rows with the initials almost completely erased. Unmounted o.g. Spec. QCom16b. **£175**
- 246 **SG504 1951 Light Ultramarine. Herne Bay Provisional Postage Due. Overprint "1D/366".** Very fine unused (without gum) example. Very rare. **£595**
- 247 **SG504var 1951 1d. Light Ultramarine. BURY ST. EDMONDS PROVISIONAL.** Unused o.g. example of this local "POSTAGE DUE" produced after the P. O. ran short of the normal 1d. Postage Due. Extremely scarce... c. 20 mint examples believed to have survived. **£950**

## POSTAL HISTORY

- 248 **SGME1 1840 1d. Mulready Letter Sheet. Stereo "A18. Forme 2. Used on First Sunday.** LINCOLN to SPALDING cancelled by two strikes of the red MC with matching dispatch c.d.s. below for MY. 10. 40. (Ref. "May Dates" p. 297). *A rarity – Cat. £16,000.* **£3950**
- 249 **SGME1 1840 1d. Mulready Letter Sheet. Stereo "A11" – Displaced. Forme 1. LONDON Number "11" in Maltese Cross.** Superb example sent to CORNWALL cancelled by an outstanding strike of the numbered MC – faint arrival c.d.s. at left and dispatch c.d.s. on reverse. "Atlas Assurance Company" (MA103i) advert on interior. *Spec. ME1wk – Cat. from £2400.* **£1600**
- 250 **SGME1 1840 1d. Mulready Letter Sheet.** Sent from STONE to STAFFORD cancelled by a neat black MC with two strikes of scarce "skeleton" arrival c.d.s. below for FE. 16. 1841. Reverse with a neat dispatch c.d.s. for the 15th. Pretty Mulready and very scarce with the "skeleton" handstamps. **£375**
- 251 **1840 Mulready Caricature. "FORES COMIC ENVELOPES No. 1". Late Use.** Designed by John Leech depicting a number of satirical vignettes. The Postage paid by 1d. Rose-red plate 80 and sent from CLAVERLEY via BRIDGENORTH to SHREWSBURY cancelled by a neat "122" duplex for JA. 9. 67. some 27 years after they were first released. Reverse with dispatch and arrival c.d.s's for the 9/10th. Fabulous item and remarkable late use. **£2750**
- 252 **SG3 1840 1d. Grey-black Pl. 1a (JB). May 16th 1840.** Very fine four margin example on large part cover neatly cancelled by a neat red MC... used on, just 10 days after issue. Rare. Holcombe Cert. *Cat. £3500.* **£1200**
- 253 **SG2 1840 1d. Black Pl. 2 (AA). May 14th. 1840.** Local LONDON cover tied by a neat red MC... very scarce May date and the first stamp in the sheet! **£1950**
- 254 **SG2 1840 1d. Black Pl. 6 (MA).** Good to wide margined example on entire sent from COMBMARTIN via ILFRACOMBE to TAVISTOCK cancelled by a neat black MC with a crisp "No 1" Receiving House h/s alongside and "Ilfracombe Py. P. " at left. Reverse with Ilfracombe c.d.s. for FE. 15. 1841. Contents relate to a loan of £100. Super Devon cover. **£750**
- 255 **SG5 1840 2d. Blue Pl. 1 (RJ).** Excellent example with good to wide margins on entire sent from EDINBURGH to CARLISLE cancelled by a red MC with a dispatch c.d.s. on reverse for FE. 4. 41. Lovely cover rarely seen so fine. BPA Cert. **£2650**
- 256 **SG5 1840 2d. Blue Pl. 1 (LE).** Fine used with clear to huge margins on entire from PLYMOUTH to LONDON cancelled by a neat strike of the "620" numeral with a boxed "No. 2" receiving house handstamp alongside. Reverse with unframed "PLYMOUTH PY POST" and dispatch c.d.s. for AU. 31. 1845. also red arrival for the 1st Sept. Most attractive and scarce "late" use. *Spec. DS5xc – Cat. £5500* **£1750**
- 257 **SG8 1841 1d. Red-brown Pl. 13 (RB). Basal Shift.** Four margined example on large part entire sent from RAVENGLASS to KENDAL cancelled by a neat black MC with a dark blue EGREMONT CUMBLD u. d. c. alongside. Reverse with dispatch and arrival marks for SP. 3/4. 1841. Extremely pretty use of this scarce plate. **£225**



- 258 **SG8 1841 1d. Red-brown Pl. 16 (SC). Exeter Maltese Cross.** Very fine four margined example used on "Wharfinger's Office" printed invoice sent from EXETER to HONITON cancelled by a singularly over-inked black MC. Dispatch and arrival c.d.s's alongside for JA. 15. 1842. Rockoff & Jackson record this as the latest date of use for this MC – a new one apparently being supplied on February 23rd. Stunning usage. Ex. F. Tyler. **£650**
- 259 **SG8 1843 1d. Red-brown Pl. 31 (JH). Dumfries Maltese Cross.** Huge margins on three sides just touched at left on entire addressed to EDINBURGH cancelled by a superb strike of the "distinctive" Scottish MC. Reverse with boxed dispatch handstamp for OC. 28. 1843. and arrival c.d.s. for the following day. Rarely seen MC. *Spec. BS20tj – Cat. £1100.* **£395**
- 260 **SG8 1843 1d. Red-brown Pl. 31 (BG). Distorted Hawick Maltese Cross.** Clear margined example on entire sent to EDINBURGH JN. 10. 1843. and cancelled by the highly distinctive and distorted MC... which Rockoff/Jackson attribute to "the cancellation of the letter on a stack of other letters which formed a markedly irregular pattern for the strike". In all probability unique! **£395**
- 261 **SG8 1843 1d. Red-brown Pl. 36 (RL). Christmas Day Dispatch.** Clear to wide margined example on envelope sent from BRIDLINGTON to DARLINGTON cancelled by the rather distinctive MC in black ink. Reverse with dispatch and arrival c.d.s's for DE. 25/25. 1843. A "pair" of wafer seals also affixed reads... "Where there is love, there is faith" and "Pleasure is like the short liv'd moth". Interesting cover... unusual. **£165**
- 262 **SG8 1843 1d. Red-brown Pl. 39 (BH). Norwich Maltese Cross.** Clear to good margined example on entire sent to LONDON cancelled by an excellent bold strike of the very distinctive MC... filing fold just missing the stamp. Reverse with dispatch and arrival c.d.s's for AP. 24/25. 1844. Very scarce MC. *Spec. BS28tz – Cat. £1250.* **£495**
- 263 **SG8 1845 1d. Red-brown Pl. 58 (DH). Double Letter "D". Posted Contrary to Regulations.** Very fine four margined example on a delightful small envelope sent from DEAL via LONDON to WORCESTER cancelled by a crisp strike of the "240" numeral with a fine "No. 1" Receiving House h/s above... the stamp placed at lower left – contrary to regulations. Reverse with dispatch, transit and arrival marks for OC. 15/17. 1845. Charming cover. *Spec. BS47b.* **£95**
- 264 **SG8d 1847 1d. Red-brown Pl. 75 (LK). Double Star "Union Jack" Re-entry.** Superb four margined example used on cover from MANCHESTER to LONDON tied by a neat strike of the "498" numeral. Dated 4. JU. 48. Exceptional example of this famous and stunning re-entry. BPA Cert. *Spec. BS28c.* **£2500**
- 265 **SG8 1841 1d. Red-brown (IH). Whitehaven Maltese Cross.** Just four margined example on wrapper sent to PENRITH dated JU. 26. 41. A fine strike of this highly elusive MC... very few covers known. *Spec. B1tak – Cat. £10,000.* **£3750**
- 266 **SG8m 1843 1d. Red-brown (LI). London Number "4" in Maltese Cross.** Clear to wide margined example on lovely fresh uncreased wrapper to MANCHESTER cancelled by an excellent strike of the numeral in MC. Reverse with dispatch and arrival c.d.s's for NO. 28/29. 1843. Superb quality. *Spec. B1ud – Cat. £1600.* **£900**
- 267 **SG8 1844 1d. Red-brown.** Stunning "Monkey Business" printed envelope sent from LONDON to BOYLE, IRELAND cancelled by an Inland office numeral with a neat blue receiver for JY. 22. 44. The cover depicts three mischievous Monkeys brilliantly illustrated in multi colours. Ex. Meroni. **£5500**
- 268 **SG13 1841 2d. Pale Blue Pl. 3 (SD – TF & BE). Transatlantic Mail.** Entire sent from LEAMINGTON to BURLINGTON, New Jersey, cancelled by neat "444" numerals. Due to misunderstanding overpaid 2d. by the sender a of the rate – 20 ¾ cents = 18 ¾ cents for US Inland Postage and 2c ship letter fee. Carried by Cunard SS "Hibernia". Dated OC. 15. 1844. A superb cover. **£2500**
- 269 **SG40 1857 1d. Rose-red.** Double rate entire paid by eight x 1d. Red... sent from LONDON to PARIS cancelled by neat strikes of the number "19" Inland office numeral with a Calais transit below and "PD" in oval. Reverse with blue dispatch c.d.s. for JU. 10. 58. Attractive. **£275**
- 270 **SG40 1857 1d. Rose-red (OJ). Late Use – 56 Years!** Superb used on typed envelope sent from BIRMINGHAM to SUSSEX cancelled by a delightful double ring c.d.s. for AU. 30. 1913. The stamp was first issued in 1857 and invalidated in 1901. Most unusual. RPS Cert. **£225**
- 271 **SG43 1864 1d. Rose-red Pl. 84 (LE).** Affixed sideways to a neat "THE ESTATES BANK" advertising envelope sent locally in LONDON cancelled by MR. 31. 65. duplex. Pretty cover. **£125**
- 272 **SG43 1866 1d. Rose-red Pl. 102 (AI).** Fabulous printed envelope depicting two duelling men in period dress inscribed "KING O' SCOTS" - one appears to be James I. Sent locally in LONDON to REGENTS ST. cancelled by a neat WC duplex for NO. 26. 68. Superb. **£975**
- 273 **SG43 1873 1d. Rose-red Pl. 168 (JK).** Delightful printed advertising envelope for George Tutill... a hugely successful (artistic) trade union banner maker. Sent from LONDON to LEDBURY cancelled by a duplex handstamp for JU. 20. 73. Super advertising cover... not seen before and in very fine condition. **£650**
- 274 **SG44 1866 1d. Lake-red (EL). Sedbergh Mailbag Seal.** Envelope used locally brilliantly cancelled by the intaglio Crown mailbag seal in black. Dated 6th July 1866. A stunning cover and major rarity. **£2350**
- 275 **SG69 1856 6d. Deep Lilac.** Entire from WHITEHAVEN to Gedney Bispham Esq. in ANTIGUA sent via London, Southampton and St. Thomas... cancelled by the "877" duplex for JU. 16. 60. with a pale red "1" manuscript accountancy mark... reverse with London transit for the 18th and faint arrival c.d.s. Bispham was associated with the firm R & H Jefferson, producers of fine rum, shippers of sugar, and owners of several plantations. **£275**
- 276 **SG69 1856 6d. Deep Lilac.** Used on 1859 1d. Pink envelope along with 2d. Blue Pl. 7 (SG45) making 9d. rate. Sent from LONDON to BOMBAY cancelled by "81" duplexes for NO. 18. 59. Arrival on reverse for the DEC. 19th. Rare franking... superb! **£650**
- 277 **SG69 & 71 1856 6d. Deep Lilac. and 1856 1s. Deep Green.** Wrapper sent from MANCHESTER to GENES (Genoa) neatly cancelled by the "498" duplex for JU. 5. 62. Reverse with London transit and arrival c. d. s for the 8th. Both stamps with stunning deep rich colour. **£275**



- 278 SG79, 89 & 43 1862 4d. Bright Red Pl. 3 (DF), 1862 1s. Deep Green. Plate No. 1 Plate 2 (JB) and SG43 1864 1d. Rose-red Pl. 78 & Pl. 85.** Irish Transatlantic Mail. Neat uncreased envelope sent by Registered mail from DUBLIN to SOUTH LANCASTER, MASSACHUSETTS via Boston. Cancelled by "186" numerals and red Boston PAID for August 6th with Dublin/Registered c.d.s. at left for JY. 22. 64. No markings on reverse. Lovely colourful combination... rare Irish use. **£850**
- 279 SG82 & 84 1863 4d. Pale Red Pl. 4 (OE) and 1862 6d. Lilac Pl. 3 (IC).** Neat uncreased envelope sent from SCARBOROUGH to AUCKLAND via London, Marseilles, Suez, Gialle and Sydney... cancelled by neat "693" duplexes for SP. 25. 64. with arrival c.d.s. below for NO. 22. 1864. Reverse with red London transit for Sept. 26. Pretty cover to NEW Zealand. **£295**
- 280 SG102 1872 3d. Deep Rose Pl. 8 (GJ).** Affixed sideways on envelope sent from FARNBORO STATION to ELK CREEK POST OFFICE, WISCONSIN cancelled by a fine strike of the "023" duplex for AU. 16. 72. Handstamped "INSUFFICIENT PREPAID" and duly charged "U. S. CURRENCY 13" (13 Cents). No marking on reverse. An attractive cover with nice markings. **£295**
- 281 SG153 1877 4d. Sage-green Pl. 16 (FC).** Entire sent at the reduced 4d. per ½oz. rate (from 1st April 1879) from LONDON to PORT STANLEY, Falkland Islands via the RMS "Montego" from Southampton and then through Montevideo and finally aboard the "Black Hawk". Cancelled by the "E. C/58" duplex for AU. 19. 79. with arrival c.d.s. for November 8th. Rare destination. **£1200**
- 282 SG157 1881 2½d. Blue Pl. 21 (QD).** Entire from JERSEY to ST MALO... uncanceled on dispatch, possibly carried by hand and posted on arrival in France then cancelled by a double ring St. Malo c.d.s. for the 15. JU. 81. with a similar red arrival mark below. No marking on reverse. Contents dated the 14th. Very pretty use and quite unusual. **£395**
- 283 SG157 & 172 1881 2½d. Blue Pl. 23 (GJ - HJ) and 1881 1d. Lilac. Die II.** Vertical pair and a single 1d. place sideways partially overlapping the envelope. LONDON to the FRIENDLY ISLANDS (Tonga) cancelled by "WC/11" duplexes for OC. 23. 83. Reverse with New Zealand transit c.d.s. for 18. DE. 83. Rare destination. **£450**
- 284 SG161 1882 6d. Grey Pl. 18.** Trio of superb hand painted envelopes sent in 1882 from BECKENHAM to SOUTH AFRICA... each with an Egyptian theme. Delightful trio. Ref. Col. Ahmed Urabi. **£2250**
- 285 SG169 1881 5d. Indigo.** Envelope from BROMLEY to HONG KONG via "Brindisi". Cancelled by a neat "144" duplex for 16. DE. 81. Addressed to Commander Parr R. N. H. M. S. Inconstant, Hong Kong "or Elsewhere". **£295**
- 286 SG172 1881 1d. Lilac. Die II.** Rebus hand painted envelope addressed to Mr Arrowsmith, 80 Lichfield Rd. Bow East. LONDON hooded c.d.s. for 13. FE. 95. Delightful. **£450**
- 287 SG172 1881 1d. Lilac. Die II.** Hand painted front depicting a Chinese type Dragon holding a pennant... almost certainly painted by Paul Vincent Woodroffe, a versatile artist, illustrator of books, posters and landscapes but chiefly known for his stained glass works - the cover being addressed to his sister at the family home of ALTON CASTLE. GUILDFORD duplex for SP. 29. 93. **£225**
- 288 SG172 1881 1d. Lilac. Die II.** Seven 1d. Lilacs plus 1d. Vermilion "Jubilee" on advertising envelope for "THE VERTICAL FEED SEWING MACHINE Co." with an illustration of the manufacturing plant in Dayton, Ohio. Sent from LONDON to the factory in DAYTON cancelled by hooded c.d.s's for 11. MY. 92. Reverse with New York transit and arrival c.d.s. for May 20th. Attractive transatlantic advertiser. **£175**
- 289 SG192 1884 4d. Dull Green (RE).** Printed envelope sent from WALSALL to LIFU... the largest Island that forms part of the LOYALTY ISLANDS, NEW CALEDONIA... cancelled by the "834" duplex for JY. 13. 85. An unusual destination. **£295**
- 290 1870 ½d. Stationery Post Card. First Day of Use.** Sent locally and re-directed in LONDON cancelled by a superb strike of the OC. 1. 70. circular handstamp. Food Journal advert on reverse. Used twice on the day! Rare. **£1650**
- 291 1878 ½d. Brown Stationery Postcard. Cancelled by Vaile's Trial Machine, Auckland, New Zealand.** Date dies for SE. 2. 74. This machine was invented by Robert Vaile of Auckland. He demonstrated this machine to the G.P.O. using GB stationery, but the G.P.O. rejected his machine. Documented in G.P.O. archives. An exceptionally rare trial cancel... the first seen! **£4750**
- 292 1892 1d. Penny Lettercard. First Day of Issue.** Addressed to BARNSBURY cancelled by a cracking LONDON squared-circle for FE. 11. 92 The F.D.I. Very rare. Huggins LCP1. **£2150**
- 293 1882 1d. FOREIGN BILL stamp.** Neat uncreased envelope sent locally in LIVERPOOL cancelled by bold squared-circles for MY. 4. 82. Most unusual. **£295**
- 294 SG217 1904 ½d. Pale Yellowish Green (x 2). D. L. R.** Delightful hand painted envelope depicting a lady powdering her face with two inscriptions... "I'M LOOKING FOR AN EARL" and "FRONT ROW OF THE BALLET". Sent from OLDHAM to LONDON cancelled by double ring c.d.s's for JA. 7. 09. Superb. Artist - John A. Stimson. **£225**
- 295 SG218 1902 ½d. Yellowish Green. D. L. R. "POSTED IN ADVANCE FOR XMAS" - Manchester 1905 Handstamp.** Delightful photographic Post Card depicting a Minstrel playing the Lute with a Christmas greeting... "Life be glad as a day in June" - possibly inspired by the American poet James Russell Lowell. Corner creases, nevertheless most collectable and very scarce. **£150**
- 296 1911 ½d Unofficial "paste-up".** Plain Post Card sent locally in EALING cancelled by a double ring c.d.s. for SP. 16. 11. The ½d. issued stamp has a cut-out full faced portrait of KGV in green pasted onto it and surprisingly the P. C. was not rejected by the Post Office... The message on the card reads "How do you like the new stamps?" Super item - most unusual. **£250**
- 297 SG420 1924 1½d. Red-brown.** Affixed sideways to a hand drawn envelope depicting a boy at the barbers. Sent from SYDENHAM to COODEN cancelled by a 1933 machine. Ex. Norris correspondence of illustrated covers. **£125**
- 298 SG665/6 1965 Salvation Army Centenary. First Day Issue.** Affixed to the Centenary issue of "THE WAR CRY" and cancelled by LONDON S. W. c.d.s. for 9. AUG. 1965. Super item. **£240**





249 1840 1d. Mulready Letter Sheet. **London** Number "11" in Maltese Cross. Superb example sent to Cornwall cancelled by an outstanding strike of the numbered MC

250 1840 1d. Mulready Letter Sheet. Sent from Stone to Stafford cancelled by a neat black MC with **two strikes of scarce "skeleton"** arrival c.d.s. below



251 Mulready Caricature. **"Fores Comic Envelopes No. 1"**. Late Use. The Postage paid by 1d. Rose-red plate 80 and sent from Claverley via Bridgenorth to Shrewsbury cancelled by a neat "122" duplex for JA. 9. 67. some 27 years after they were first released!



253 1840 1d. Black  
Pl.2. **May 14th. 1840.**  
Local London cover  
tied by a neat red MC



252 1840 1d. Grey-black  
Pl.1a. **May 16th. 1840.** Very  
fine four margin example  
on large part cover neatly  
cancelled by a neat red MC



255 1840 2d. **Blue Pl.1.**  
Excellent example with  
good to wide margins on  
entire sent from **Edinburgh**  
to **Carlisle**



254 1840 1d. Black Pl.6.  
Good to wide margined  
example on entire sent  
from **Combmartin** via  
**Ilfracombe to Tavistock**  
cancelled by a neat black  
MC with a crisp "**No 1**"  
**Receiving House h/s**  
alongside and "Ilfracombe  
Py. P." at left



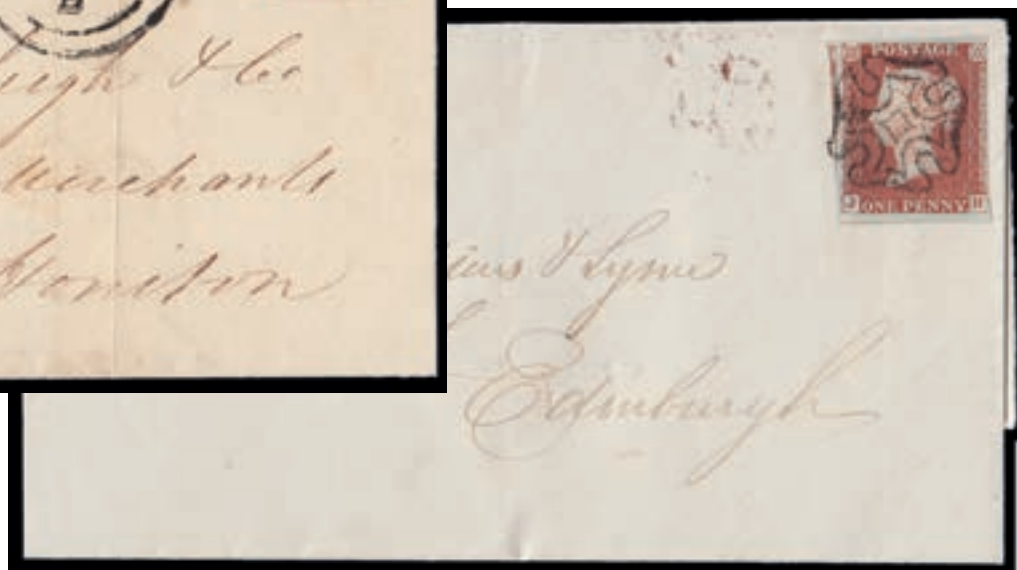
256 1840 2d. Blue Pl.1.  
 Fine used with clear to  
 huge margins on entire  
 from Plymouth to  
 London cancelled by a  
 neat strike of the "620"  
 numeral with a boxed  
 "No. 2" receiving house  
 handstamp alongside.



257 1841 1d. Red-brown Pl.13.  
 Four margined example on  
 large part entire sent from  
**Ravenglass to Kendal**  
 cancelled by a neat black MC  
 with a dark blue "EGREMONT  
 CUMBLD" u.d.c. alongside.



258 1841 1d. Red-brown Pl.16.  
**Exeter Maltese Cross.** Very fine  
 four margined example used on  
 "Wharfinger's Office" printed  
 invoice sent from **Exeter** to  
**Honiton** cancelled by a singularly  
 over-inked black MC

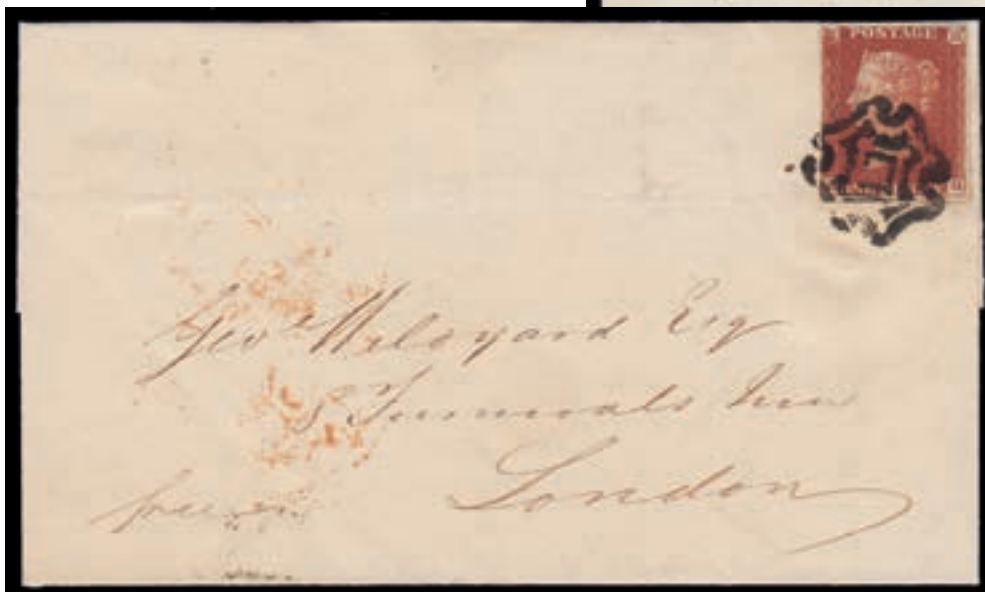


260 1843 1d. Red-brown Pl.31. **Distorted  
 Hawick Maltese Cross.** Clear margined example  
 on entire sent to Edinburgh JN. 10. 1843.

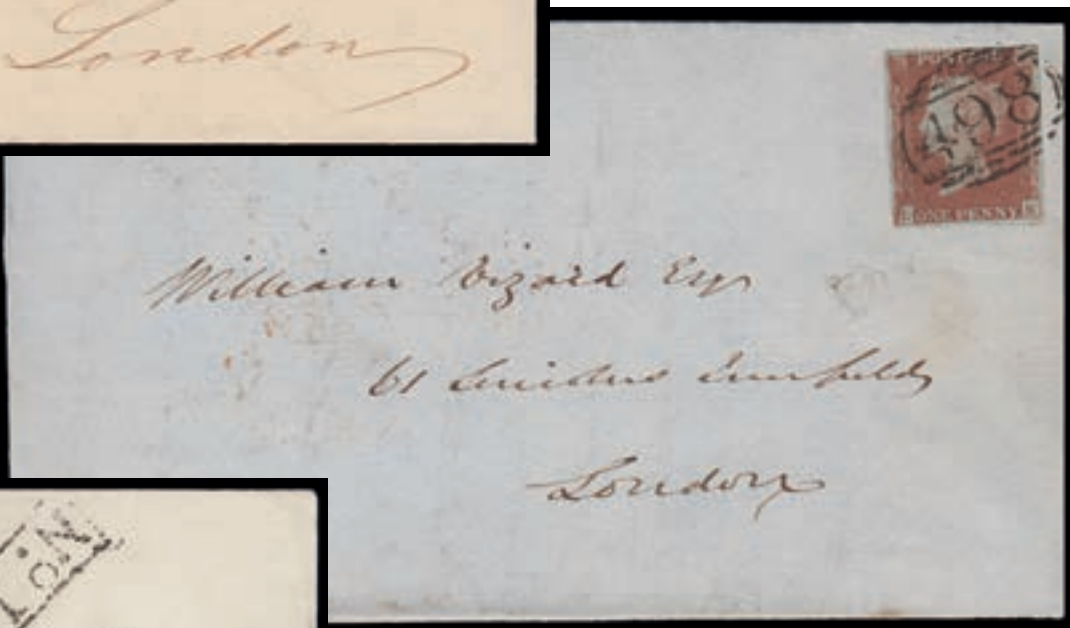
259 1843 1d. Red-brown Pl.31. **Dumfries Maltese Cross.** Huge margins on three sides just  
 touched at left on entire addressed to **Edinburgh** cancelled by a superb strike of the  
 "distinctive" Scottish MC



261 1843 1d. Red-brown Pl.36. **Christmas Day Dispatch**. Clear to wide margined example on envelope sent from Bridlington to Darlington cancelled by the rather distinctive MC in black ink



262 1843 1d. Red-brown Pl.39. **Norwich Maltese Cross**. Clear to good margined example on entire sent to **London**



264 1847 1d. Red-brown Pl.75. **Double Star "Union Jack" Re-entry**. Superb four margined example used on cover from **Manchester** to **London**



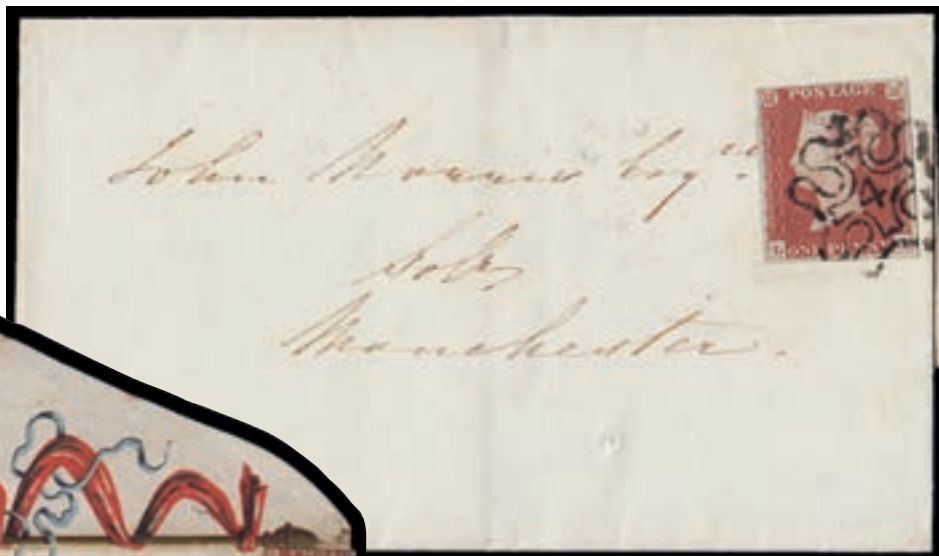
263 1845 1d. Red-brown Pl.58. **Posted Contrary to Regulations**. Delightful small envelope sent from **Deal** via **London** to **Worcester** cancelled by a crisp strike of the "240" numeral with a fine "No. 1" Receiving House h/s above

265 1841 1d. Red-brown. **Whitehaven Maltese Cross**. Just four margined example on wrapper sent to **Penrith**





266 1843 1d. Red-brown. **London**  
**Number "4" in Maltese Cross.**  
 Clear to wide margined example on  
 lovely fresh uncreased wrapper to  
**Manchester**



267 1844 1d. Red-  
 brown. Stunning  
**"Monkey Business"**  
 printed envelope sent  
 from **London** to  
**Boyle, Ireland**



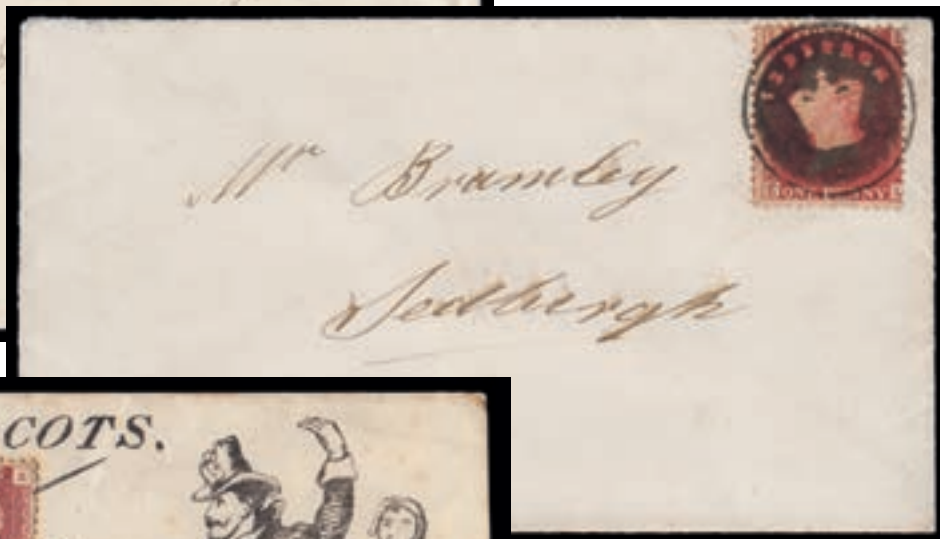
270 1857 1d. Rose-red. **Late**  
**Use – 56 Years!** Superb used  
 on typed envelope sent from  
**Birmingham** to **Sussex**

269 1857 1d. Rose-red.  
**Double rate entire** paid by  
 eight x 1d. Red... sent from  
**London** to **Paris**





271 1864 1d. Rose-red Pl.84.  
Affixed sideways to a neat  
**"THE ESTATES BANK"**  
advertising envelope sent  
locally in **London**



274 1866 1d. Lake-red.  
**Sedbergh Mailbag Seal.**  
Envelope used locally brilliantly  
cancelled by the intaglio Crown  
mailbag seal in black



272 1866 1d. Rose-red Pl.102.  
Fabulous printed envelope depicting  
two duelling men in period dress  
inscribed **"KING O' SCOTS"** - one  
appears to be James I. Sent locally  
in **London**



275 1856 6d. Deep Lilac.  
Entire from **Whitehaven** to  
Gedney Bispham Esq. in  
**Antigua** sent via London,  
Southampton and St. Thomas



273 1873 1d. Rose-red Pl.168.  
Delightful printed **advertising**  
**envelope for George Tutill**... a hugely  
successful (artistic) trade union banner  
maker. Sent from **London** to **Ladbury**



276 1856 6d. Deep Lilac. Used on 1859 1d. Pink envelope along with 2d. Blue Pl.7 making 9d. rate. Sent from **London** to **Bombay**



277 1856 6d. Deep Lilac. and 1856 1s. Deep Green. Wrapper sent from **Manchester** to **Genes** (Genoa)



279 1863 4d. Pale Red Pl.4 and 1862 6d. Lilac Pl.3. Neat uncreased envelope sent from **Scarborough** to **Auckland** via London, Marseilles, Suez, Gialle and Sydney

281 SG153 1877 4d. Sage-green Pl.16. Entire sent from **London** to **Port Stanley**, Falkland Islands via the RMSP "Montego" from Southampton and then through Montevideo and finally aboard the "Black Hawk"



278 1862 4d. Bright Red Pl.3, 1s. Deep Green and 1864 1d. Rose-red. **Irish Transatlantic Mail**. Neat uncreased envelope sent by Registered mail from Dublin to South Lancaster, **Massachusetts** via Boston



U. S. America  
U.S. CURRENCY  
13  
PREPAID  
FARNBORO STATION  
WISCONSIN  
72  
1023

280 1872 3d. Deep Rose Pl.8.  
Affixed sideways on envelope  
sent from **Farnboro Station**  
to **Elk Creek Post Office,**  
**Wisconsin**

Mrs John Markham  
Elk Creek Post Office

Received  
Sep 9/72  
Tempehau Co.

Answered  
Sep 14/72  
Wisconsin.



Monsieur  
Gules Loyal Rue St Barbe  
C<sup>te</sup> 4

Marcus Frederick Cornwall  
Zavan,  
Friendly Islands  
South Western Pacific  
Sept 9/72  
Small letter in a  
dark font.

282 1881 2½d. Blue Pl.21. Entire  
from **Jersey** to **St Malo**...  
uncancelled on dispatch, possibly  
carried by hand and posted on  
arrival in France

283 1881 2½d. Blue Pl.23 and 1881  
1d. Lilac. Die II. Vertical pair and a  
single 1d. place sideways partially  
overlapping the envelope. **London**  
to the **Friendly Islands** (Tonga)

Brindisi

Commander  
A. A. C Parr R. N.  
H. M. S. Inconstant  
Detached Squadron  
on Elmdene Hong Kong



285 1881 5d. Indigo.  
Envelope from **Bromley**  
to **Hong Kong** via  
"Brindisi". Addressed to  
Commander Parr R.N.  
H.M.S. Inconstant, Hong  
Kong "or Elsewhere".





284 1882 6d. Grey Pl.18. Trio of superb hand painted envelopes sent in 1882 from **Beckenham** to **South Africa**... each with an Egyptian theme



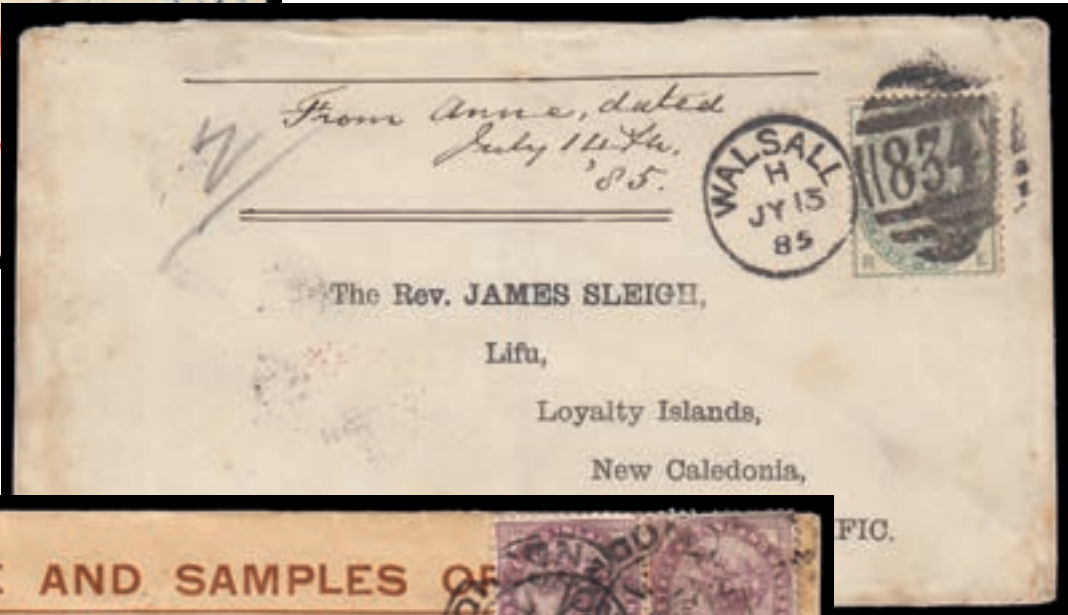
286 1881 1d. Lilac. Die II. **Rebus hand painted envelope** addressed to Mr Arrowsmith, 80 Lichfield Rd. Bow East



287 1881 1d. Lilac. Die II. **Hand painted front** depicting a Chinese type Dragon holding a pennant... almost certainly painted by Paul Vincent Woodroffe... the cover being addressed to his sister at the family home of **Alton Castle**



289 1884 4d. Dull Green. Printed envelope sent from **Walsall** to **Lifu**... the largest Island that forms part of the Loyalty Islands, New Caledonia



288 1881 1d. Lilac. Die II. Seven 1d. Lilacs plus 1d. Vermilion “Jubilee” on advertising envelope for **“THE VERTICAL FEED SEWING MACHINE Co.”** with an illustration of the manufacturing plant in Dayton, Ohio





291 1/2d. Brown Stationery Postcard. Canceled by **Vaile's Trial Machine**, Auckland, New Zealand. Date dies for SE.2.74. This machine was invented by Robert Vaile of Auckland. Documented in G.P.O. archives. An exceptionally rare trial cancel... **the first seen!**



290 1/2d. Stationery Post Card. **First Day of Issue**. Sent locally and re-directed in **London** cancelled by a superb strike of the OC. 1. 70. circular handstamp



292 1d. Penny Lettercard. **First Day of Issue**. Addressed to Barnsbury cancelled by a cracking **London** squared-circle for FE. 11. 92



293 1d. **Foreign Bill** stamp. Neat uncreased envelope sent locally in **Liverpool**



294 1904 1/2d. Pale Yellowish Green. Delightful **hand painted envelope** depicting a lady powdering her face with two inscriptions... "I'M LOOKING FOR AN EARL" and "FRONT ROW OF THE BALLET". Sent from **Oldham** to **London**



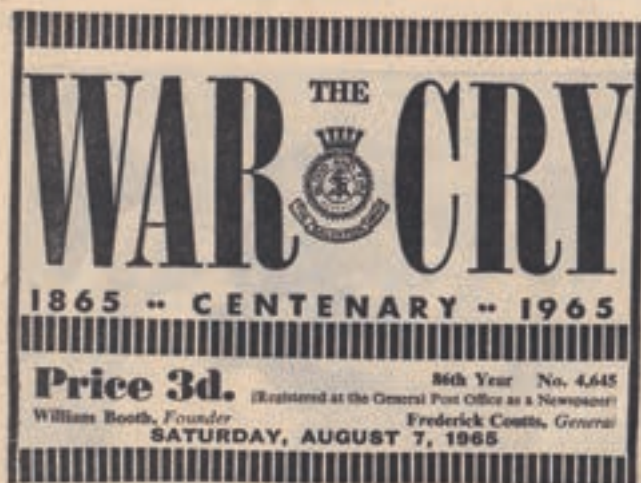


295 1902 ½d. Yellowish Green. D.L.R. “**POSTED IN ADVANCE FOR XMAS**” – Manchester 1905 Handstamp. Post Card depicting a Minstrel playing the Lute with a Christmas greeting... “Life be glad as a day in June”

296 ½d Unofficial “paste-up”. Plain Post Card sent locally in Ealing



297 1924 1½d. Red-brown. Affixed sideways to a **hand drawn envelope** depicting a boy at the barbers. Sent from Sydenham to Cooden



298 1965 Salvation Army Centenary. **First Day Issue**. Affixed to the Centenary issue of “**THE WAR CRY**”



## LATE ADDITIONS

**299** SG219 1902 1d. Scarlet. Leadbetter Correspondence.  
Wonderful hand painted envelope depicting a Giraffe...  
London to Harrow with c.d.s. for NO. 4. 05. **£225**



**300** SG219 1902 1d. Scarlet. Leadbetter Correspondence.  
Stunning hand painted envelope depicting a stained glass with a beautiful Peacock taking center-stage... London to Wrexham cancelled by a neat double ring c.d.s. for JY. 10. 07. **£595**

**301** SG219 1902 1d. Scarlet. Leadbetter Correspondence. Super hand painted envelope depicting a dapper Bull Dog... London to Willesden Green machine cancellation for FEB. 24. 06. **£225**



**302** SG219 1902 1d. Scarlet. Leadbetter Correspondence. Delightful hand painted envelope depicting a Stork watching an approaching Alligator... London to Harrow with c.d.s. for NO. 8. 05. **£225**